



4B Whale View Bunbury, WA

 3
  2
  2

## LOCK & LEAVE WITH SOARING VIEWS

Situated in the sought after Marlston Hill on an elevated 353m<sup>2</sup> block with views of the Bunbury Ocean, is this three bedroom, two bathroom two storey home built in 2002 by Smith Construction.

This residence incorporates all the living, kitchen, dining and entertaining upstairs with the main bedroom and the two minor bedrooms, bathroom and laundry are down stairs. This perfect lock and leave home has low maintenance and reticulated gardens, artificial lawns, double glazed and tinted windows and sliding doors with the front verge providing guest parking and rear access to the large double garage.

Property features include:

Ensuite has single basin vanity, large shower and WC

Main bathroom has single basin vanity, bath and shower

Kitchen has plenty of bench and cupboard space, fridge recess, Bosch dishwasher, gas stove top and Bosch oven, microwave recess, walk in pantry and overlooks the open plan living a

For more details please visit :

<https://www.summitbunbury.com.au/4728173>

**Price:** \$527500

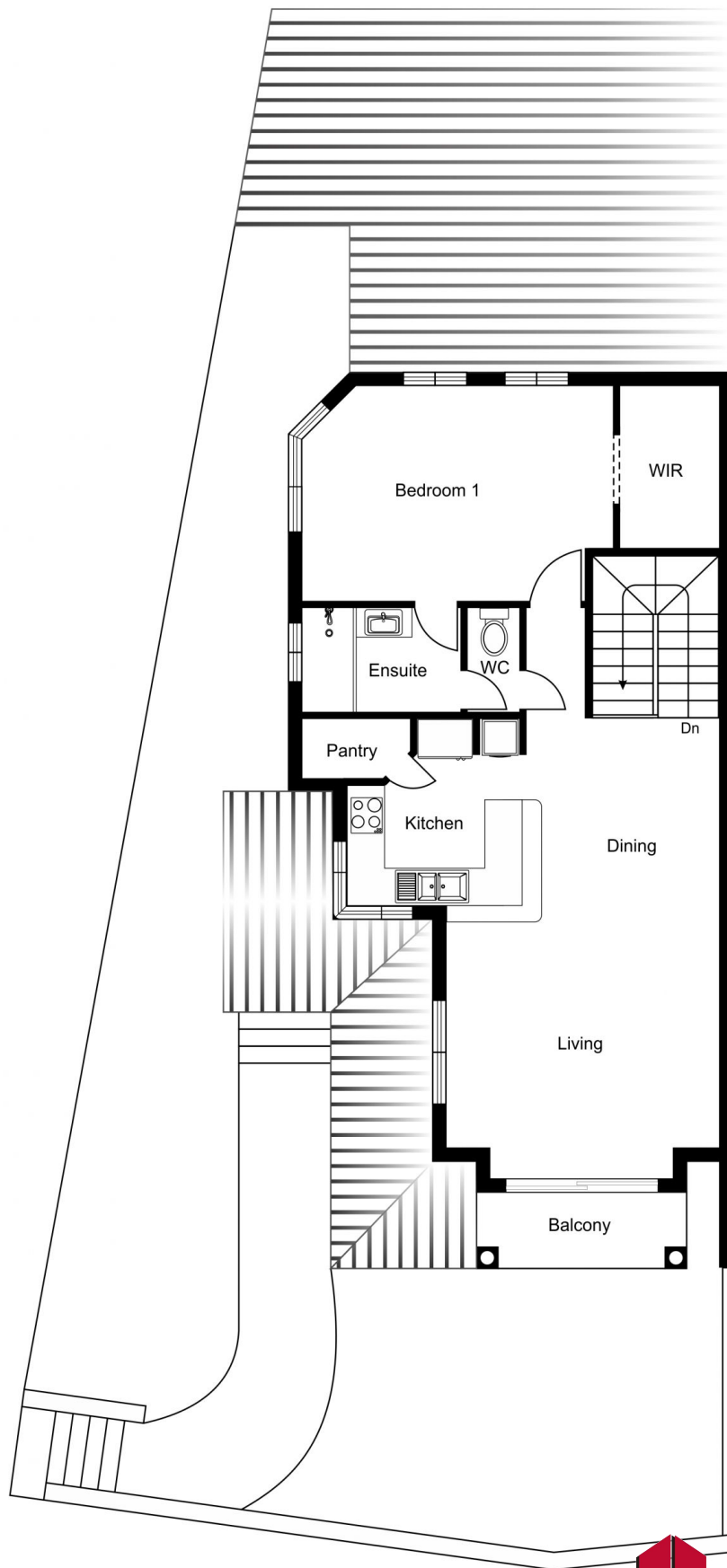
**Council Rates:** \$2,165.00/year (approx)

**Water Rates:** \$1,349.08/year (approx)



**Tim Cooper**

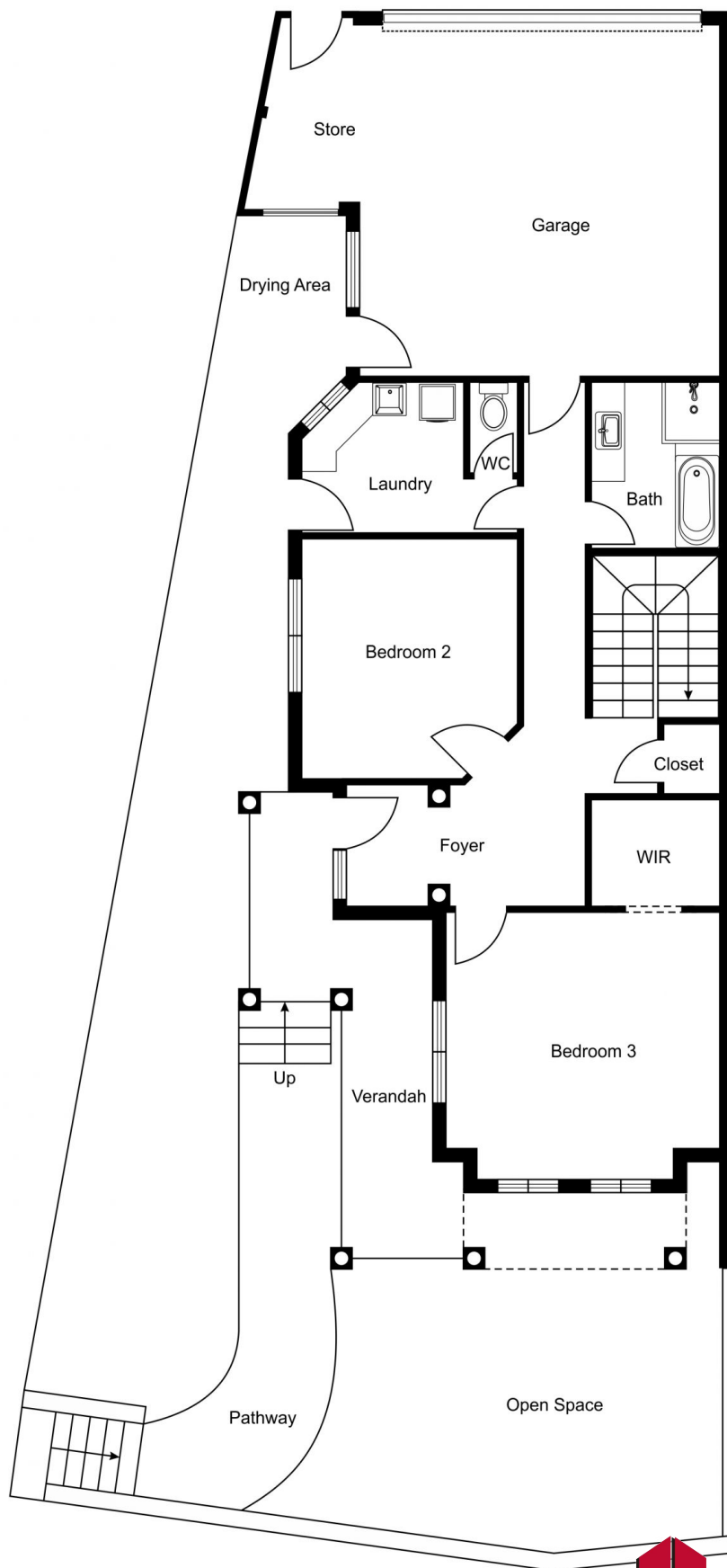
0437 068 028



4B Whale View

Bunbury, WA





4B Whale View

Bunbury, WA

