



28 Mitchell Road Preston Beach, WA

 3

 2

 4

Views to Yalgorup National Park

Wake up and enjoy Breakfast on the Balcony and take in the views across the road to Yalgorup National Park

Price: \$310000

This home is well equipped with 3 bedrooms, 2 bathrooms and 3 wc's

From the spacious casual and formal living areas, to the galley kitchen this fantastic new holiday home to the Preston Beach market has everything you would need. Located on Mitchell Road, the direct road to the water front, and everything Preston has to offer.

This property has 3 great sized bedrooms, large laundry with extra storage and the wc. The bathroom is just what you need with shower, vanity and the second wc.

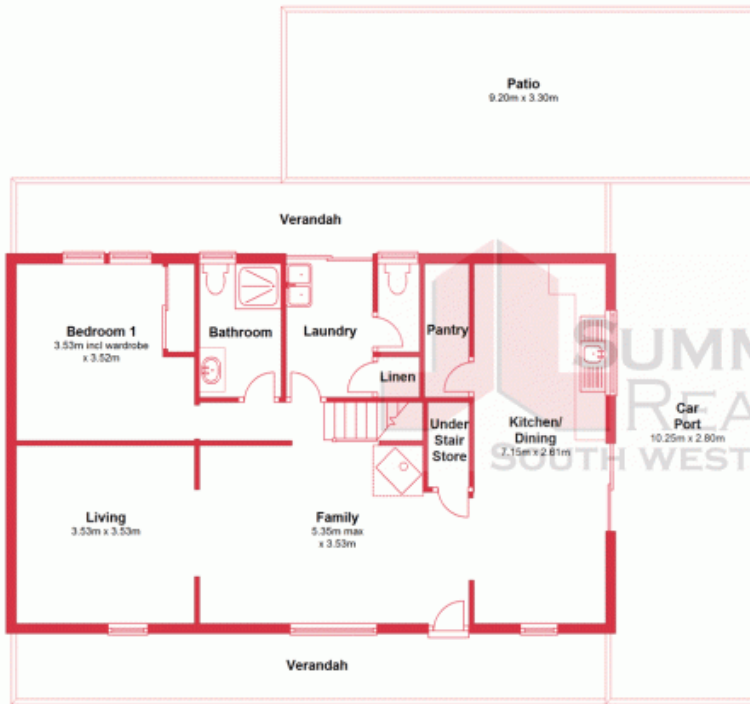
Upstairs there is the second bathroom plus the third wc, 2 bedrooms and a games room acti

For more details please visit :
<https://www.summitbunbury.com.au/4728664>

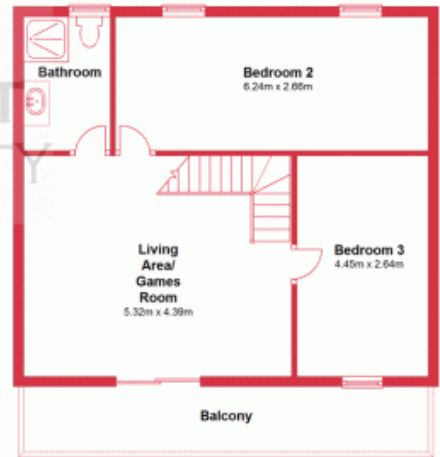


Lorraine Grassie

Ground Floor



First Floor



This plan has been prepared for marketing purposes only. Whilst every care is taken in the production of this plan, measurements, angles and positioning of doors/windows may not be accurate. Interested parties are strongly advised to undertake their own checks when establishing the suitability for furniture etc. Not To Scale.
Plan produced using PlanUp.

28 Mitchell Road, Preston Beach

28 Mitchell Road

Preston Beach, WA

