



DALYELLUP, WA

 4
  2
  2

ESTABLISHED SIDE OF DALYELLUP

Homes of this quality don't come up for sale very often on this sought after side of Dalyellup. On the right hand side heading towards the beach from Norton Promenade is the elite position where homes were first built when Dalyellup first was developed.

This home is elevated on a corner block with side access to a shed. A boat or caravan could easily be parked here. Only 3 years old features are as follows:

4 double bedrooms, 2 bathrooms

Wide hallway with windows for brightness

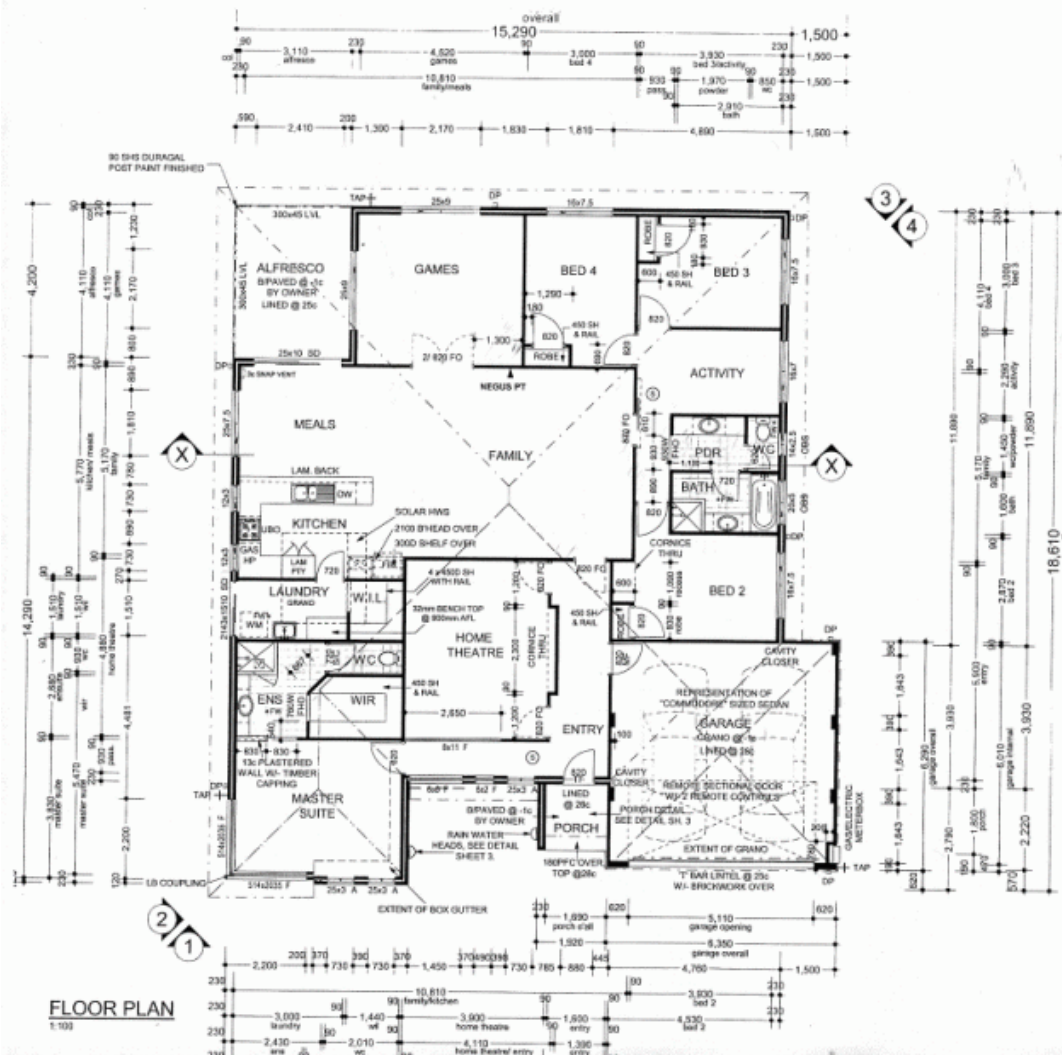
Activity room or office

Price: \$465,000 Plus



Lorraine Grassie

For more details please visit :
<https://www.summitbunbury.com.au/4731592>



Location	Area (sq)	Perimeter (m)
ALFRESCO	13.440	16.803
GARAGE	39.150	25.289
HOUSE	223.960	87.800
PORCH	3.110	7.000
	279.660	116.892

ROOF AREA (ON FLAT) = 304.29m²

WIND CLASSIFICATION AS PER A.S. 4055:
N1 - FOR SINGLE STOREY RESIDENCE

NOTE:

- TOP OF FOOTINGS FOR PIERPOSTS TO CANOPY, VERANDAH & PORCH ARE TO BE 200 BELOW FINISHED FLOOR LEVEL
- LOCATION OF DOWN PIPES IS INDICATIVE ONLY & MAY BE CHANGED AT BUILDERS DISCRETION
- FLYSCREENS & KEYLOCKS TO ALL ALUMINUM WINDOWS AND SLIDING DOORS
- R2.5 INSULATION TO FLOOR AND RAKING (IF APPLICABLE) CEILING AREAS OF HOUSE AND GARAGE

RENDER WITH
2 COATS OF PAINT.

Ⓢ DENOTES SMOKE DETECTOR

DALYELLUP, WA

