



10 Yeoman Place BINNINGUP, WA

3 1 2

The Perfect Retreat

This beach house is the perfect escape from the pressures of city living and is located only 90 minutes from Perth.

The house is situated at the rear of the 815m2 block to make the most of the ocean views. There are two large deck areas - one on the south side, perfect for capturing the sea breeze on a summer afternoon. Plus there is a large, north facing deck at the rear - a lovely sunny, warm place to sit outdoors in the winter months.

The bathroom has neutral tiles and features a shower, large vanity and a bath. There is a double linen press in the hallway.

Underneath the house is a large, double length garage with automatic door. Adjacent is an additional storage area so that tools, garden implements, the boat, fishing rods and surfboards.

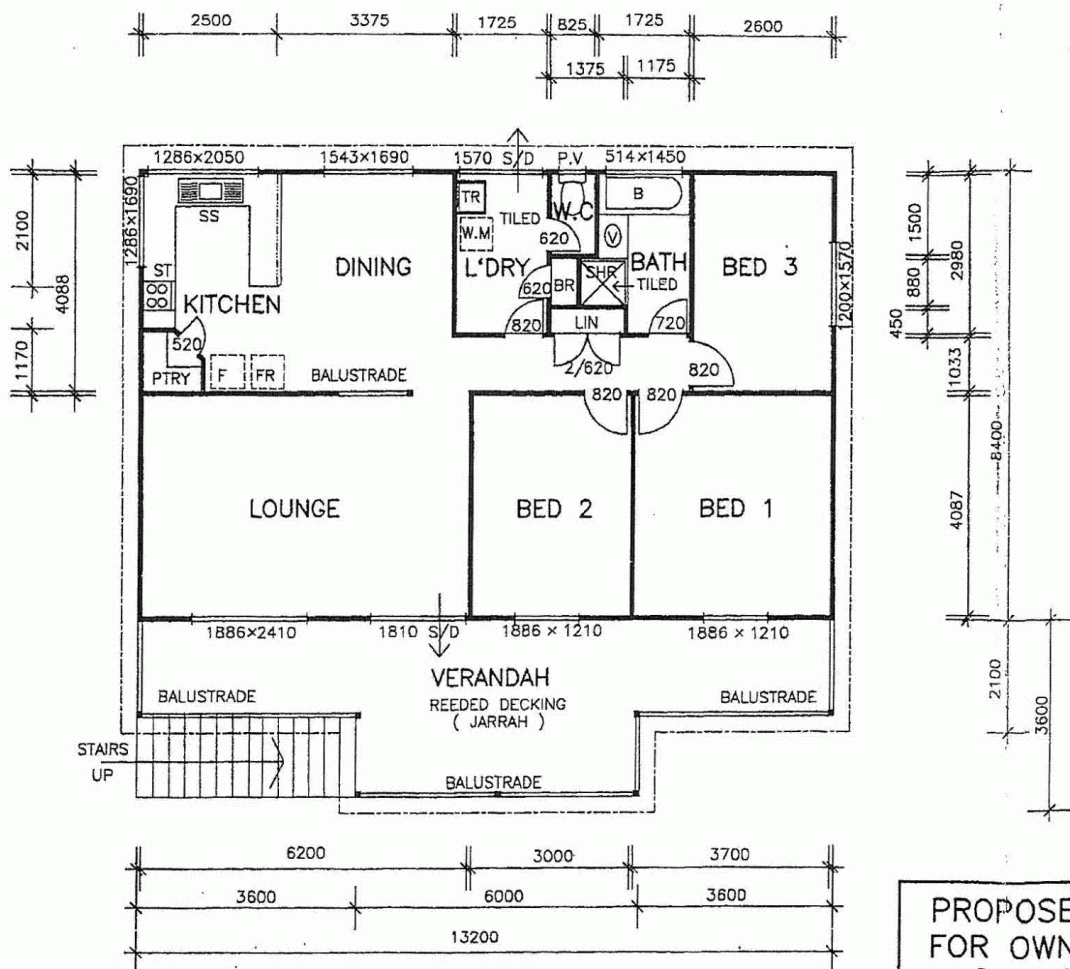
For more details please visit :
<https://www.summitbunbury.com.au/4732422>

Price: \$375,000



Ruth Nandapi

0419 955 965



PROPOSED
FOR OWNER

10 Yeoman Place

BINNINGUP, WA

