



2/9 Marlston Drive BUNBURY, WA

 3  2  1

INNER CITY CONVENIENCE BY THE SEA

On offer is an inner city, easy-care lifestyle with excellent proximity to nearby beaches and Bunbury's central business and entertainment hub.

From the balcony you can look out over towards the iconic Silos development, Koombana Bay and the rolling hills beyond, across to the infamous "Milk Carton", and down towards the ocean. Further down Marlston Drive is the checkerboard Bunbury lighthouse and nearby the Bunbury Tower look-out.

This is your opportunity to secure a cleverly designed terrace in a small group of three, positioned on the doorstep to the city.

- Rendered front exterior facade has been repainted
- Ensuite toilet is a separate powder room

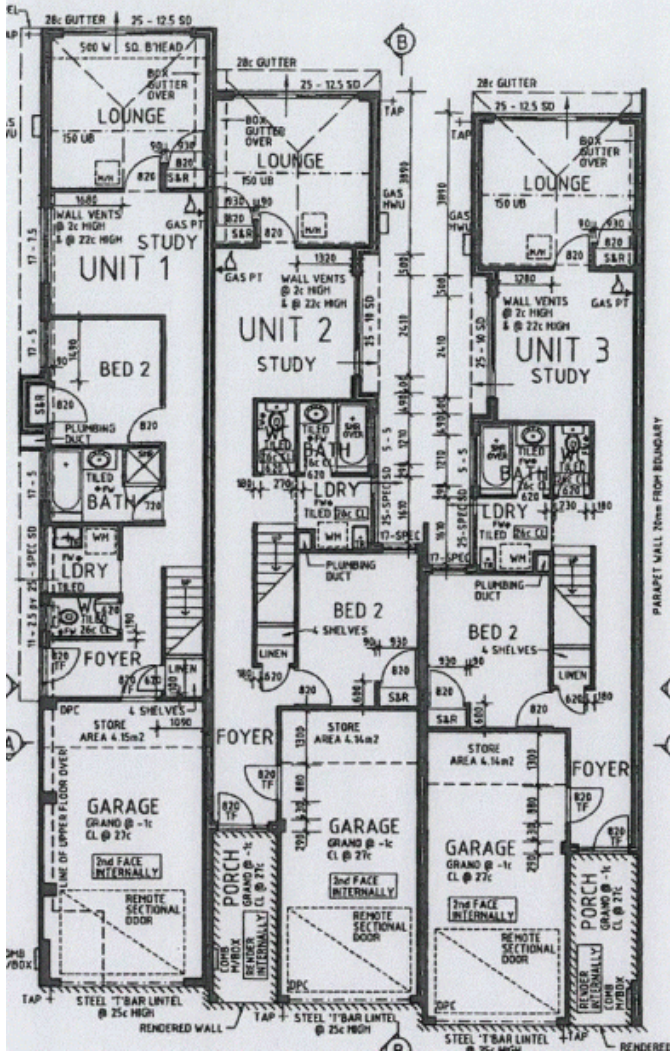
Price: \$525,000



Lorraine Grassie

For more details please visit :
<https://www.summitbunbury.com.au/4732857>

GROUND FLOOR



SECOND STOREY

