



5 Whitewood Close EATON, WA



4



2



2

Quality Home with Eaton's Best Workshop ?

Easy care private front yard, all lawns and gardens fully automatically reticulated from the mains water supply. Approaching the front door there is a functioning camera that can be monitored from the kitchen. Security screen doors and windows around the house.

Generous sized tiled entry opposite the front door is the direct access into the home from the larger than normal 2 car remote controlled garage.

22mm thick solid natural bamboo floors which flow throughout the home. The 1st of the two separate living spaces consists of its own reverse cycle air conditioner and ceiling fan.

Open plan living area which can be closed off to the rest of the home via the two glass doors. In the kitchen area there is heaps of cupboards, walk in pantry with lots of shelving and automatic lighting. Loads of bench space, island bench even contains a wells set up s

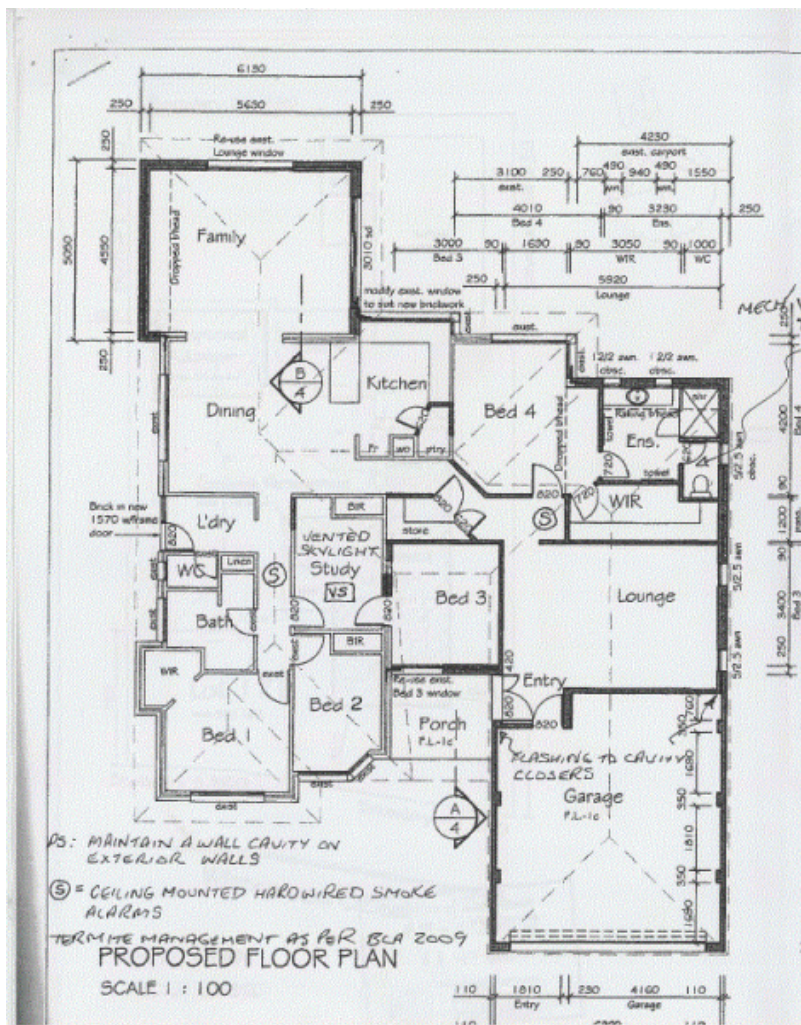
For more details please visit :

<https://www.summitbunbury.com.au/4733132>

Price: \$479,000



Lorraine Grassie



5 Whitewood Close

EATON, WA

