



18 Palmerston Street CAREY PARK, WA



3



1



1

Like Money? Like Work?

This could be the perfect, little diamond in the rough if you were thinking of buying an investment property or a little 'fixer upper' to flip.

Sitting in an idea location in Carey Park on a big 796m2 corner block located close to medical facilities, university, TAFE, parks and shops.

Feature of this property include:

- Single carport
- Side access
- Outdoor patio area
- Big shed with 2 roller doors
- Living area with gas bayonet
- Three bedrooms - carpet in all rooms one with a built in robe

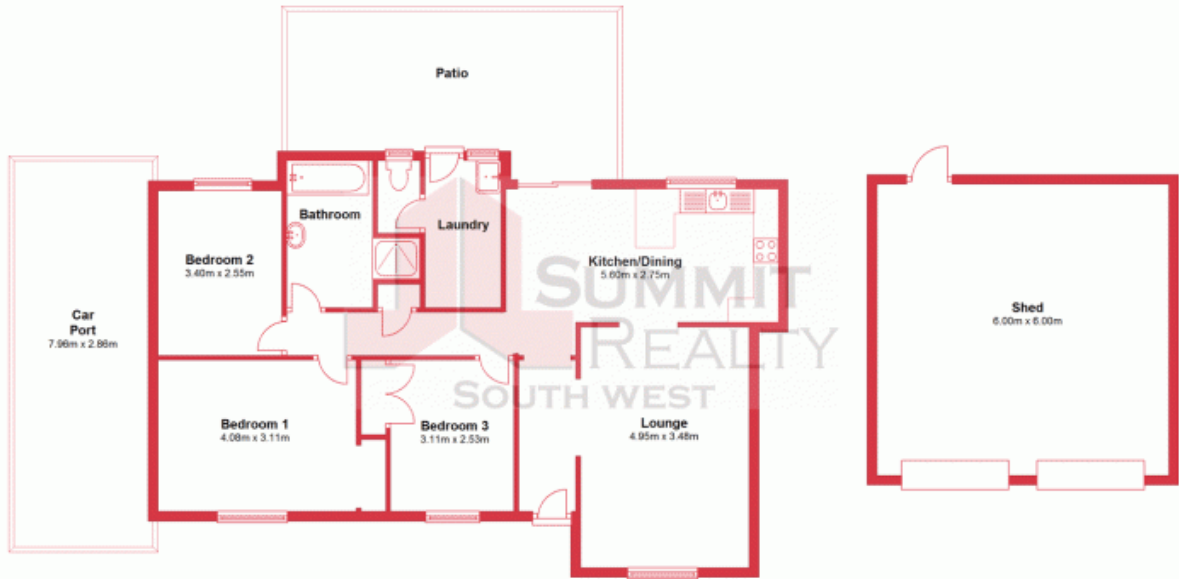


Lorraine Grassie

For more details please visit :

<https://www.summitbunbury.com.au/4733189>

Ground Floor



This plan has been prepared for marketing purposes only. Whilst every care is taken in the production of this plan, measurements, angles and positioning of doors/windows may not be accurate. Interested parties are strongly advised to undertake their own checks when establishing the suitability for furniture etc. Not To Scale.
Plan produced using PlanUp.

18 Palmerston Road, Carey Park, Bunbury

18 Palmerston Street

CAREY PARK, WA

