



4/5 Wittenoom Street BUNBURY, WA

 2
  1
  2

AFFORDABLE INNER CITY LIVING

**** PRICED TO SELL ****

In a prime location this apartment is walking distance from the cafe strip and restaurants, close to the beach, lookout tower and has great views over to the silos and back into town.

With a modern contemporary feel this apartment is ideal for the couple looking to downsize, an investor looking for a low maintenance addition to their portfolio or the busy single looking to enjoy what Bunbury has to offer.

Features include:

- 2x1 double storey unit
- Built in robes to both bedrooms

For more details please visit :

<https://www.summitbunbury.com.au/4733222>

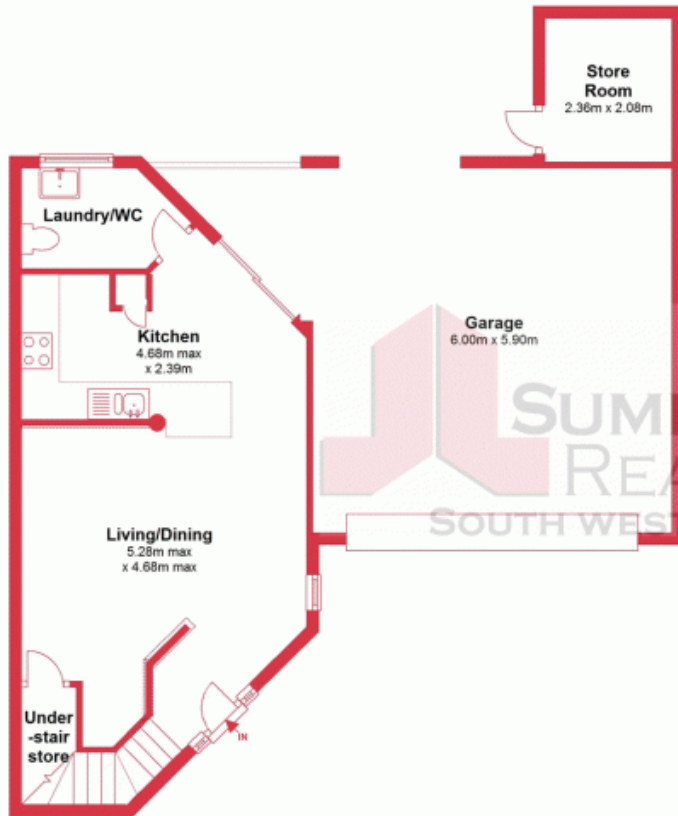
Price: Priced to sell \$335,000



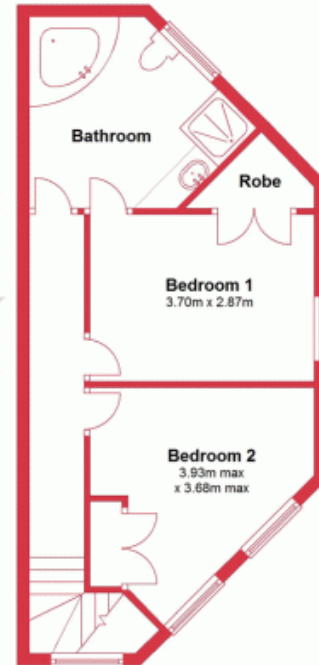
Tracy Mills

0429 000 887

Ground Floor



First Floor



This plan has been prepared for marketing purposes only. Whilst every care is taken in the production of this plan, measurements, angles and positioning of doors/windows may not be accurate. Interested parties are strongly advised to undertake their own checks when establishing the suitability for furniture etc. Not To Scale.
Plan produced using PlanUp.

4/5 Wittenoom St, Bunbury

4/5 Wittenoom Street

BUNBURY, WA

