



3 St Andrews Hill LESCHENAULT, WA



3



2



1

## Sitting Pretty HOME OPEN CANCELLED

As you enter the driveway you will be captivated by this solid family home. Situated towards the rear of the block the home maximizes the views across to the Darling Scarp. The semi-circular hotmix driveway, adds to the charm and provides a practical layout for accessing the shed and other areas of the property.

Come through the solid Jarrah front door and you will find:

- A spacious tiled entry which creates an impressive entrance. Behind two doors is a bar cabinet complete with glass shelves, bench and room for the bar fridge.
- A generous dining area adjoins the kitchen and has a reverse cycle air conditioner and a sliding door to the verandah
- At the end of the hallway a door leads to the large single garage which has an auto door as well an access door to the backyard. The garage is double brick, has a ceiling and also a panel of glass bricks. If you need a fourth bedroom, this could be a practical solution

For more details please visit :

<https://www.summitbunbury.com.au/4733317>

**Price:**

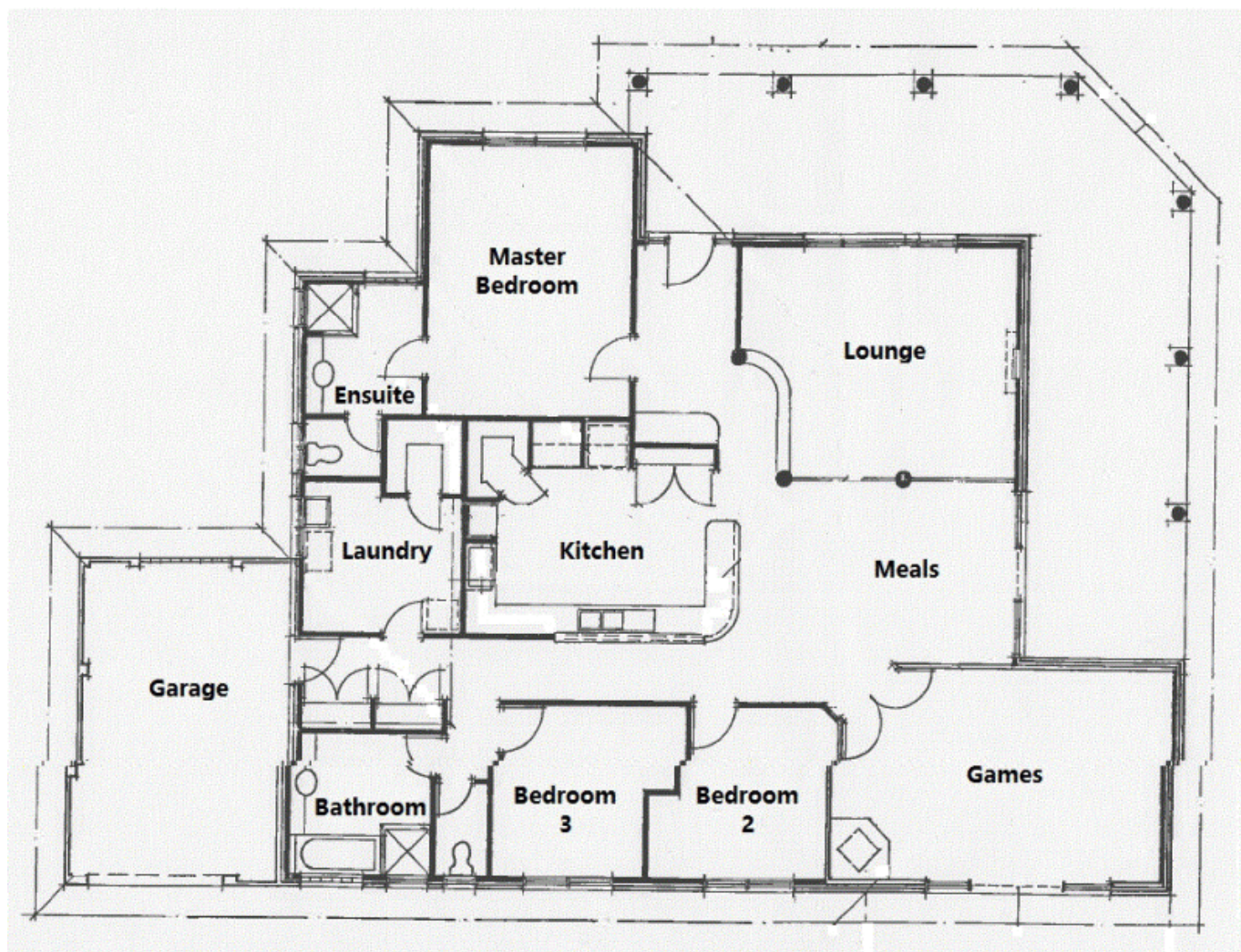
Offers Above \$600,000



**Ruth Nandapi**

0419 955 965





3 St Andrews Hill

LESCHENAULT, WA

