



32 Hewison Street WITHERS, WA



4



1



1

GREAT STARTING POINT OR INVESTMENT

Other features include:

- Four bedrooms with well-maintained carpets
- Large open living area towards the front of the home
- Separate dining area off of the kitchen
- Renovated kitchen with modernised appliances
- Tiled flooring throughout
- Spacious alfresco area great for entertaining
- Single carport with drive-through access to the rear
- Two lock up garden shed for additional storage
- Covered entertaining area off main living room
- Spacious rear yard
- Close to all amenities

Price: From \$235,000

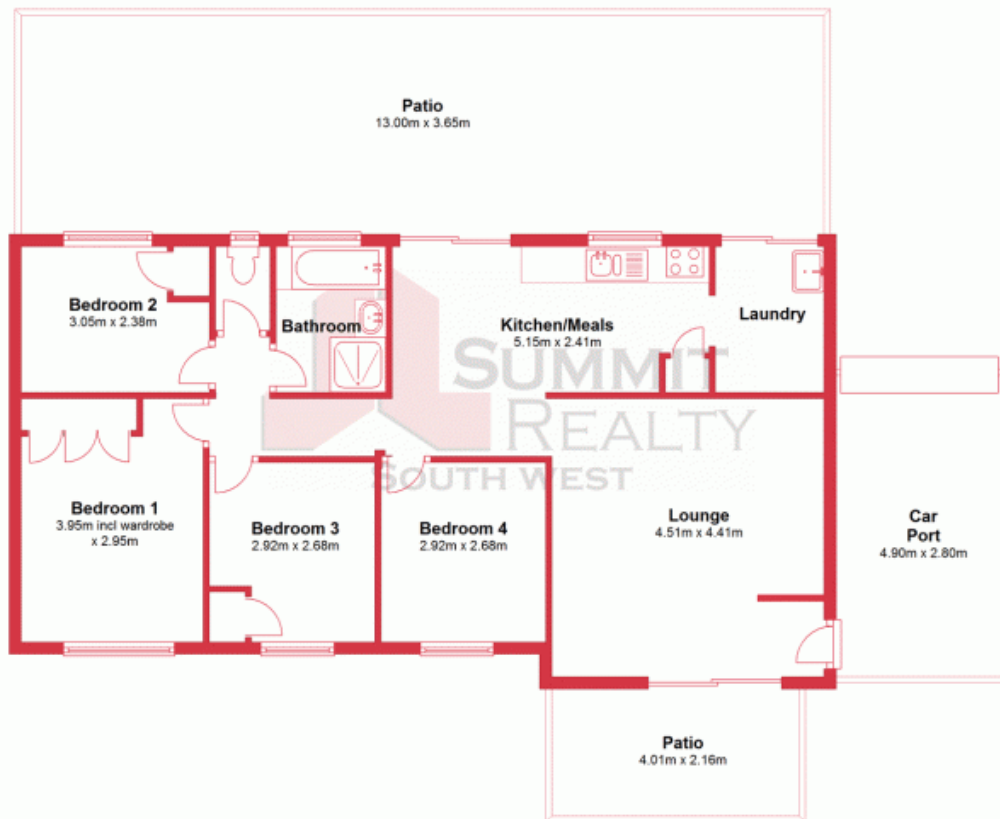


Tim Cooper

0437 068 028

For more details please visit :
<https://www.summitbunbury.com.au/4733321>

Ground Floor



This plan has been prepared for marketing purposes only. Whilst every care is taken in the production of this plan, measurements, angles and positioning of doors/windows may not be accurate. Interested parties are strongly advised to undertake their own checks when establishing the suitability for furniture etc. Not To Scale.
Plan produced using PlanUp.

32 Hewison Street, Withers

32 Hewison Street

WITHERS, WA

