



12 Yeoman Place BINNINGUP, WA

 4
  2
  2

### Facing the View

You need to step inside this home to appreciate its clever design and the sweeping views. The property oozes coastal charm- you will feel like you are on holiday every day!

Built in 2001 the home has been designed to maximise the ocean views from the majority of the rooms. The open planned living area is the perfect place to admire the view and enjoy the company of family and friends.

The dining area is big enough for the largest dining table and the multitude of windows helps bring the outside, inside.

The family room is adjacent and has plenty of sliding doors to access the outside deck and wide verandas.

From the magnificent Tasmanian Oak flooring, through to the immaculate bathrooms, you can tell this house has been built and finished to the highest standards.

Outside the wide verandas and deck on the North West corner are finished with timber decking and marine wire balustrading. Underneath there is parking for two cars, plus room for a

**For more details please visit :**

**<https://www.summitbunbury.com.au/4733331>**

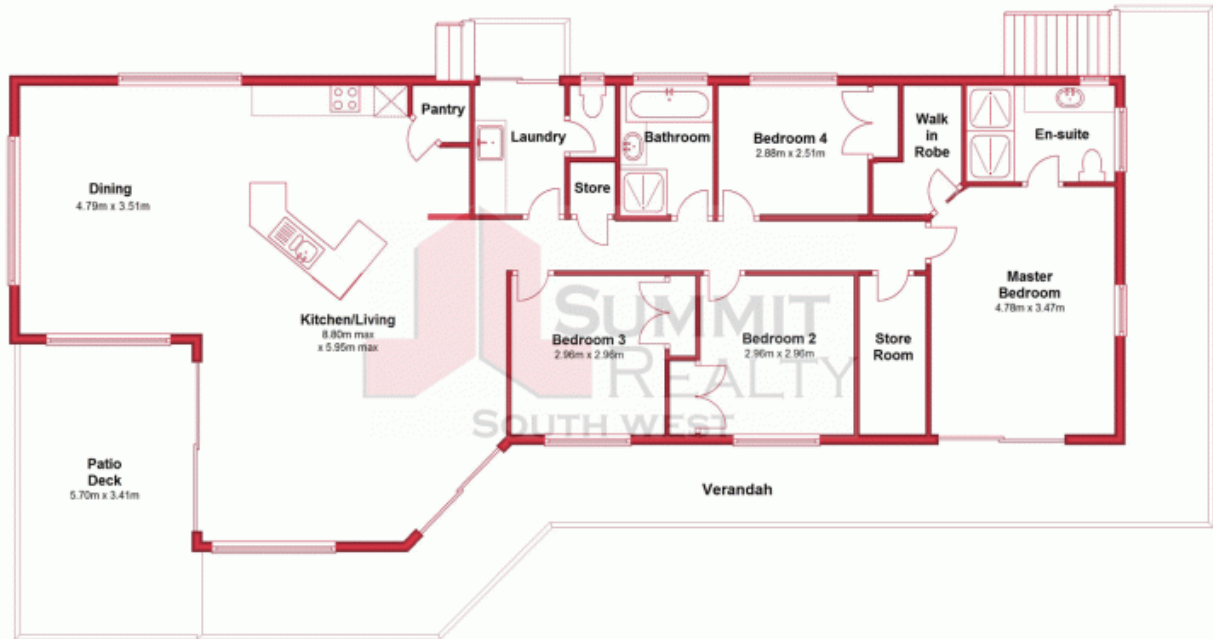
**Price:** UNDER OFFER



**Ruth Nandapi**

0419 955 965

Ground Floor



This plan has been prepared for marketing purposes only. Whilst every care is taken in the production of this plan, measurements, angles and positioning of doors/windows may not be accurate. Interested parties are strongly advised to undertake their own checks when establishing the suitability for furniture etc. Not To Scale.  
Plan produced using PlanUp.

12 Yeoman Place, Binningup

12 Yeoman Place

BINNINGUP, WA

