

7A Thistle Street WITHERS, WA



4



2



2

BARGAIN BUYING

Other features include:

- Four bedrooms all with well-maintained carpets and built in robes
- Open plan living/dining area
- Separate lounge/theatre room to the front of the home
- Spacious kitchen with modern stainless steel appliances
- Quality tile floors throughout
- Alfresco area ideal for entertaining
- Double open carport with direct access inside
- Lock up garden shed
- Large paved courtyard
- Directly opposite public open space

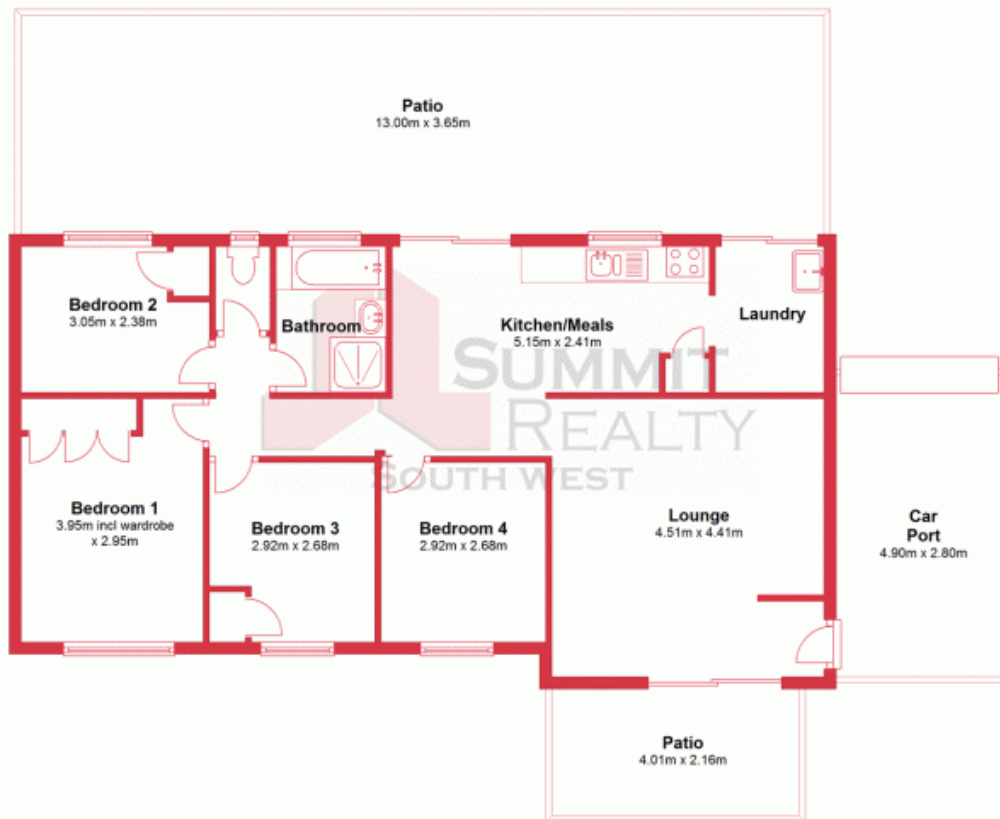
For more details please visit :
<https://www.summitbunbury.com.au/4733395>



Tim Cooper

0437 068 028

Ground Floor



This plan has been prepared for marketing purposes only. Whilst every care is taken in the production of this plan, measurements, angles and positioning of doors/windows may not be accurate. Interested parties are strongly advised to undertake their own checks when establishing the suitability for furniture etc. Not To Scale.
Plan produced using PlanUp.

32 Hewison Street, Withers

7A Thistle Street

WITHERS, WA

