



4 Palm Street BUNBURY, WA



4



2



4

## CHARACTER & CHARM - PRICE SLASHED

This superb home is in the heart of a pristine sought after area that most only dream of.

Built in the 1960s this timeless classic large family home has maintained its original charm with the tasteful additions and recent renovations to modernize this family home - just move in and enjoy.

This unique property consists of 4/5 bedrooms and 2 bathrooms, 3 toilets spanning over two majestic levels also has ample parking for 4 cars at the rear of the property.

Special features include but are not limited to:

Beautiful solid polished Jarrah floors flow through the home from the formal dining/ stair

**For more details please visit :**

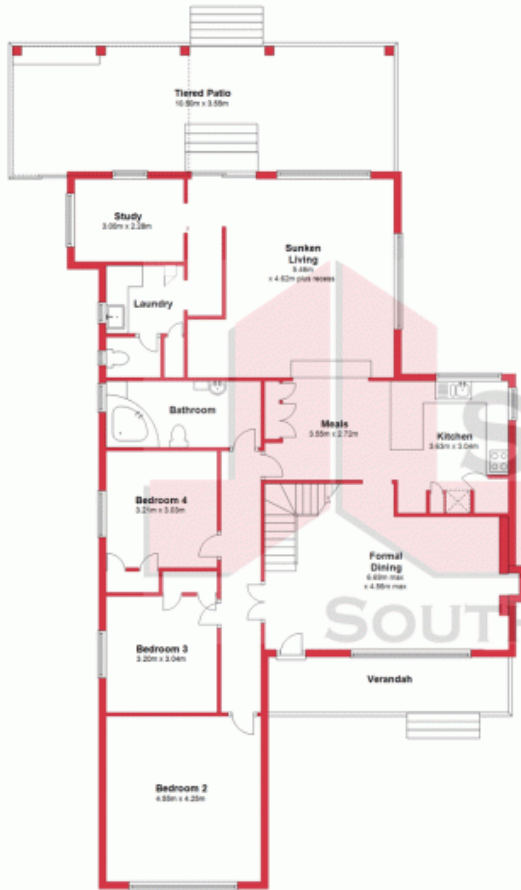
**<https://www.summitbunbury.com.au/4733766>**



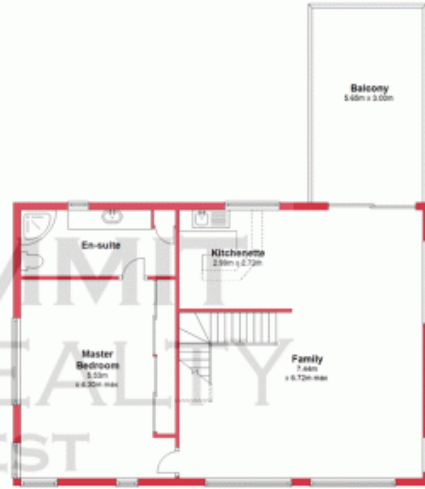
**Tim Cooper**

0437 068 028

Ground Floor



First Floor



This plan has been prepared for marketing purposes only. Whilst every care is taken in the production of this plan, measurements, angles and positioning of doors/windows may not be accurate. Interested parties are strongly advised to undertake their own checks when establishing the suitability for furniture etc.  
Not To Scale  
Plan produced using PlanUp.  
4 Palm St, Bunbury