



17-19 Tuscany Green BINNINGUP, WA



4



2

Cool, Calm & Collected

If you are looking for a unique home that encapsulates that holiday feel every day, be sure to check out this colorbond and steel home in Lakewood Shores. In addition to the house on 873m² there is also the adjoining block of 575m² which currently provides extra open space and lawned area around the property.

Built in 1998 the house is suitable for a permanent home, or alternatively continue to run it as holiday accommodation so you can use it on weekends and rent it out when you cant make it to Binningup.

Come up the ramp to discover what lies within:

Outside there is:

For more details please visit :

<https://www.summitbunbury.com.au/4733788>

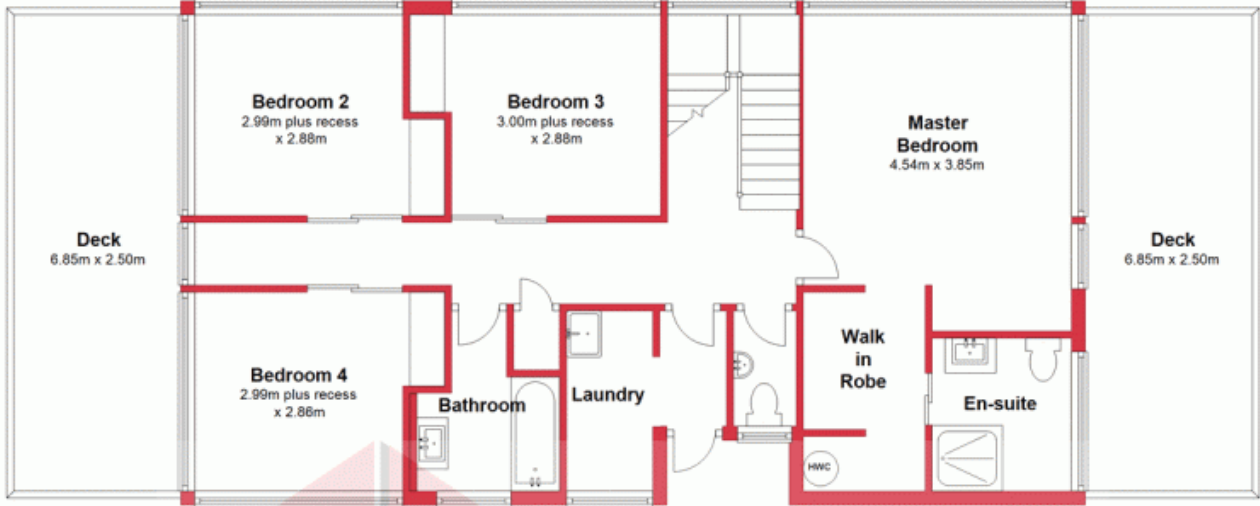
Price: \$525,000



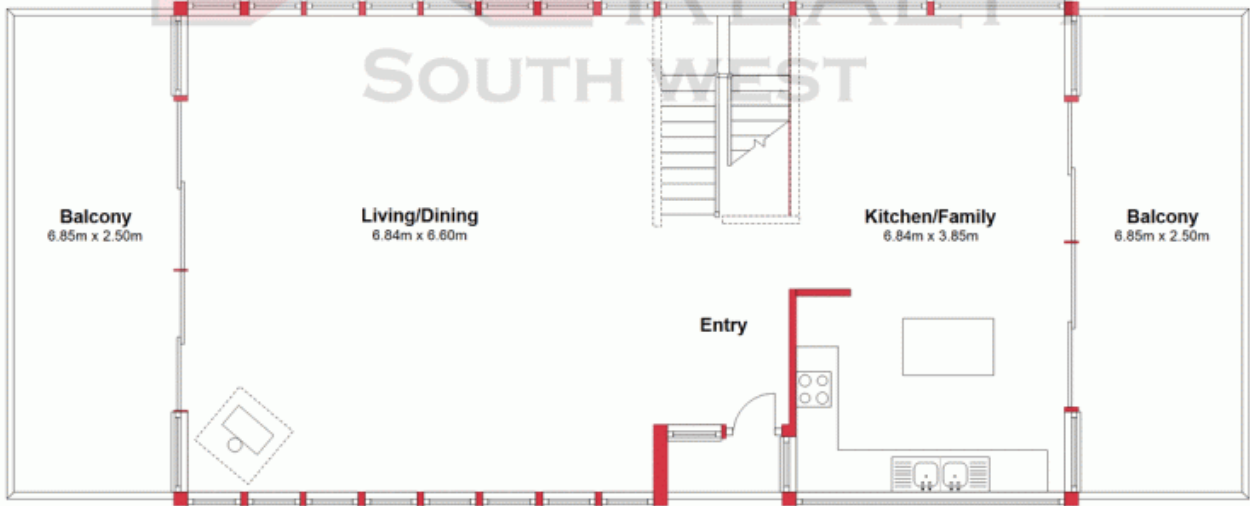
Ruth Nandapi

0419 955 965

Ground Floor



First Floor



This plan has been prepared for marketing purposes only. Whilst every care is taken in the production of this plan, measurements, angles and positioning of doors/windows may not be accurate. Interested parties are strongly advised to undertake their own checks when establishing the suitability for furniture etc. Not To Scale.

Plan produced using PlanUp.

17-19 Tuscany Green

17 Tuscany Green, Binningup
BINNINGUP, WA

