

20 Sampson Road BUNBURY, WA

 5

 3

 2

Wow When Size and Quality Matters

Sprawling over 782sqm and within walking distance to the Bunbury CBD this expansive 5 bedroom 3 bathroom residence wants for nothing. Impressively large this prestigious home boasts 338sqm of living space plus 56sqm of garage and workshop and will suit any size family.

The glamour is apparent as soon as you walk into the entrance hall with large polished stone tiles and marble finish to the walls.

Stunning open plan kitchen, formal dining, family room and spacious scullery will blow you away. Entertain and dine to your heart's content here.

There is a bonus room currently fully decked out as a hairdressing salon but could be easily be converted to a utility/ sewing room.

The home has also been built wheelchair friendly throughout.

Outside entertaining has been catered for with a 9.5mtr x 5.1mtr patio.

The front elevation of this home doesn't indicate what's beyond; you have to step inside

For more details please visit :

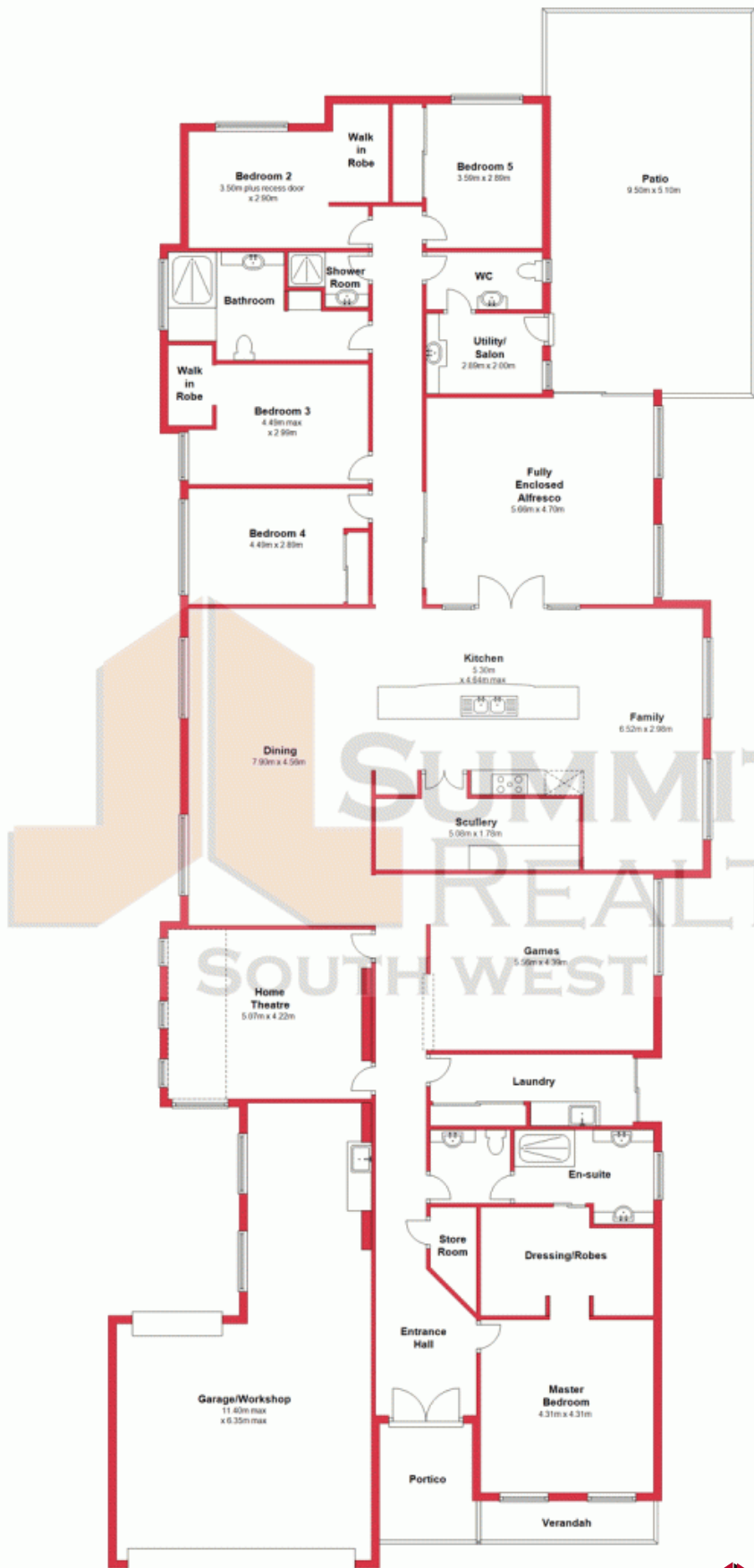
<https://www.summitbunbury.com.au/4733989>

Price: \$700,000-\$749,000



Lorraine Grassie

Ground Floor



This plan has been prepared for marketing purposes only. Whilst every care is taken in the production of this plan, measurements, angles and positioning of doors/windows may not be accurate. Parties are strongly advised to undertake their own checks when establishing the suitability for furniture etc. Not To Scale. Plan produced using PlanUp.

20 Sampson Road

BUNBURY, WA

