



13/13 Paris Road AUSTRALIND, WA

 2
  1
  2

WALKING DISTANCE TO EVERYTHING!

Sitting within the St Nicholas complex, this neat and tidy two-bedroom unit is just a stroll to the Australind Shopping Centre and just over the road to the Estuary where you can enjoy your morning walks.

The interior boasts two well-sized bedrooms, both complete with built in robes, semi ensuite and a separate second toilet along with an open plan living, dining and kitchen area.

An extra-long garage offers you the space to park two cars with secure internal access and an additional store room for all your storage needs.

Offering you a relaxed lifestyle within a community-oriented complex, this unit is waiting for you to call it home.

Price: Offers Over \$249,000

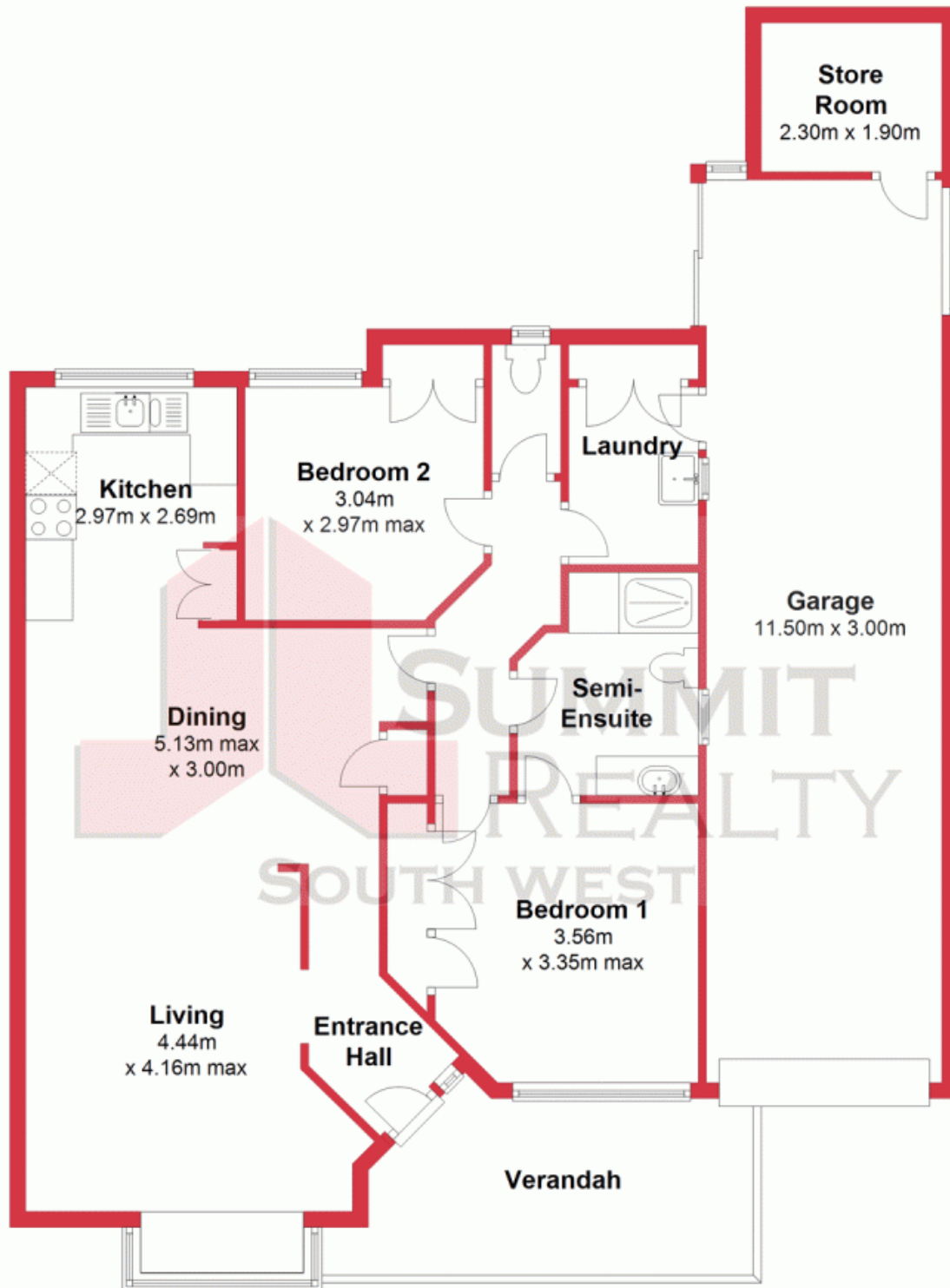


Lorraine Grassie

For more details please visit :
<https://www.summitbunbury.com.au/4734052>

www.summitbunbury.com.au

Ground Floor



This plan has been prepared for marketing purposes only. Whilst every care is taken in the production of this plan, measurements, angles and positioning of doors/windows may not be accurate. Interested parties are strongly advised to undertake their own checks when establishing the suitability for furniture etc. Not To Scale.

Plan produced using PlanUp.

13/13 Paris Road

13/13 Paris Road, Australind
AUSTRALIND, WA

