



20 Frances Road Gelorup, WA

 4
  3
  2

UNDENIABLE ELEGANCE SET PRIVATELY AMONGST TOWERING TREES

Located in the leafy suburb of Gelorup, this gorgeous home is a delightful discovery. Hidden from the street and situated on a well-established one acre parcel of land directly adjoining the prestigious Bunbury Grammar School. This spectacular solid brick and tile residence displays the grandeur of its era with substantial gardens and pool surrounds.

Other features include but are not limited to:

- Main residence features three large bedrooms all with built in robes
- Open plan dining adjoining kitchen
- Large open living room
- Hardwood timber floors to entry, kitchen and dining
- Quality tiled flooring to the rest of the first floor
- Double garage separate from the main home

For more details please visit :
<https://www.summitbunbury.com.au/4734074>

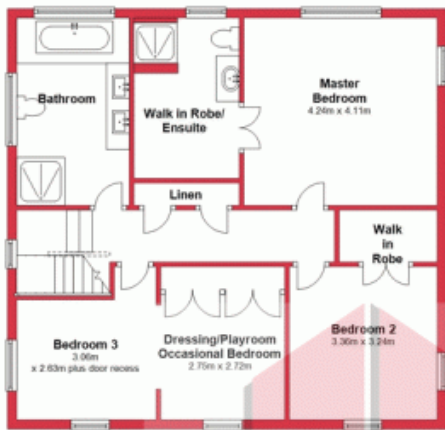
Price: \$790,000



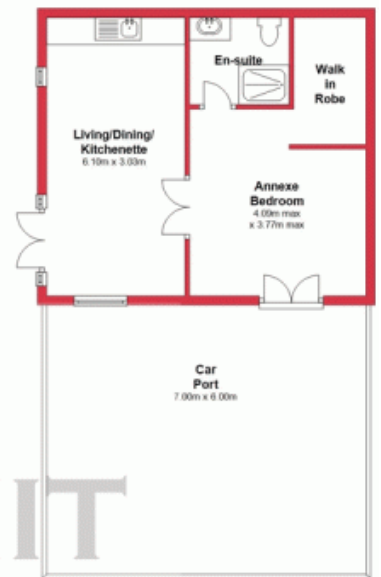
Tim Cooper

0437 068 028

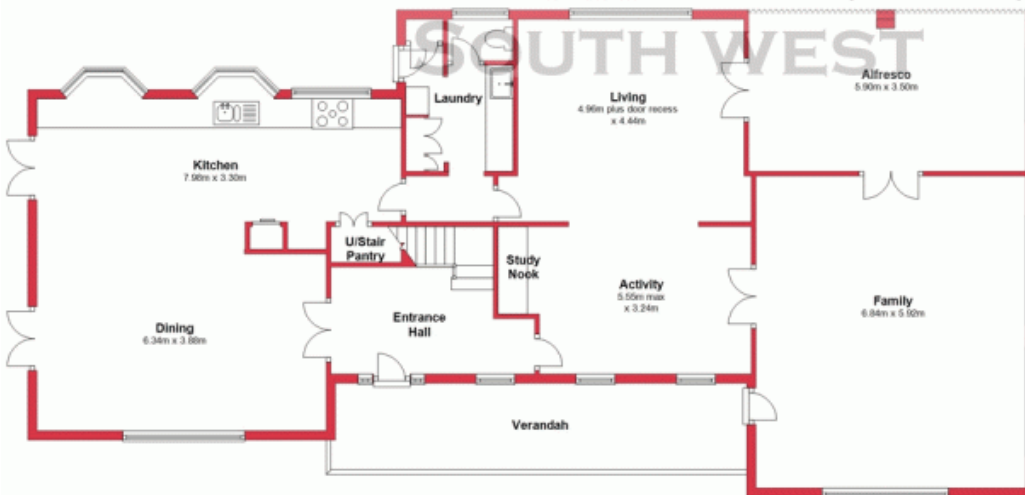
First Floor



Ground Floor



Ground Floor



This plan has been prepared for marketing purposes only. Whilst every care is taken in the production of this plan, measurements, angles and positioning of doors/windows may not be accurate. Interested parties are strongly advised to undertake their own checks when establishing the suitability for furniture etc. Not To Scale.
 Plan produced using PlanUp.

20 Frances Road, Gelorup

20 Frances Road

Gelorup, WA

