



28 Eastern Rise HENTY, WA



PICTURE PERFECT COTTAGE

With magnificent, sweeping views across vineyards and farmland, over the escarpment to Bunbury, and beyond to the sparkling Indian Ocean, this beautifully kept home is perfectly located in the stunning Ferguson Valley.

Boasting 12 and a half acres of land this picture perfect location shares a boundary with the Wellington National Park and is within walking distance to superb wineries, a brewery, a top class Mountain Bike track, yet is only a 25minute drive to the Bunbury CBD.

Features include:

- Reverse cycle air-conditioning to both floors

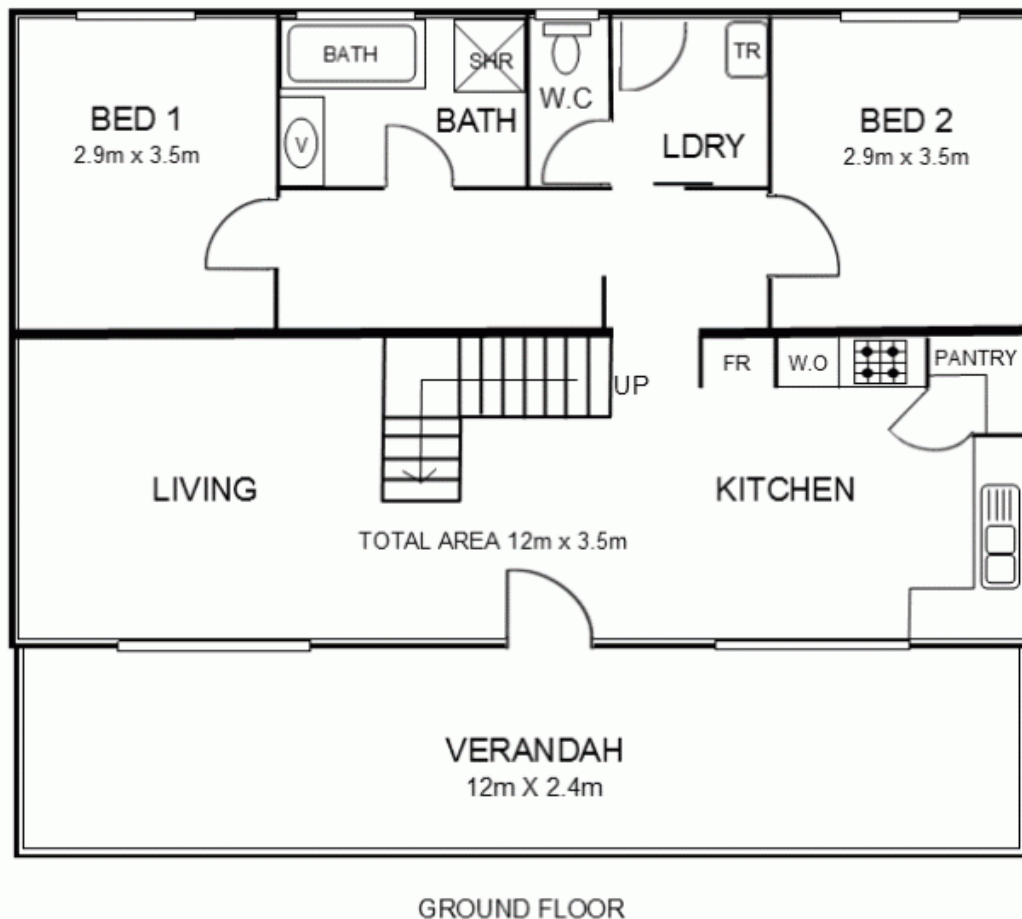
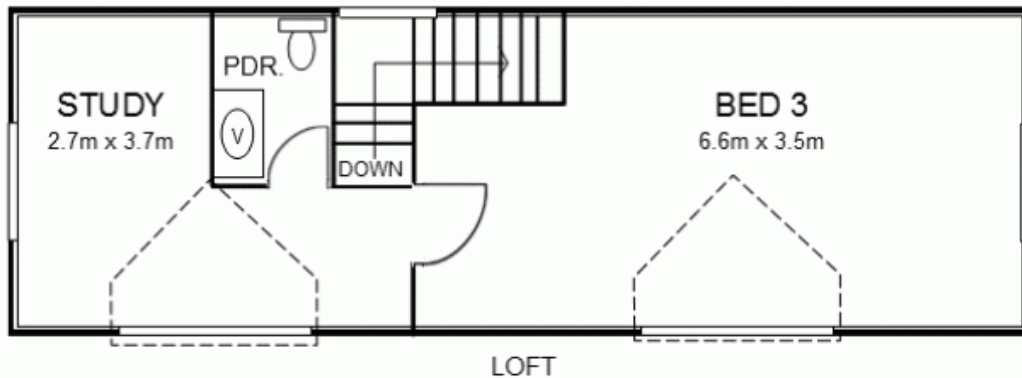
Price: \$750,000



Lorraine Grassie

For more details please visit :

<https://www.summitbunbury.com.au/4734124>



This plan has been prepared for marketing purposes only. Whilst every care is taken in the preparation of this plan, measurements, angles and positioning of doors/windows may not be accurate. Interested parties are strongly advised to undertake their own checks when establishing the suitability for furniture etc.. Not to scale.