

12 Wakefield Crescent Australind, WA

5 bedrooms, 2 bathrooms, 3 cars

Location & Lifestyle

The complete package awaits you at 12 Wakefield Crescent - large family home with lots of storage, shed, room for the boat and a below ground pool. Located in Australind Private Estate, this quiet location allows you to be close to the shops, estuary, schools and sporting facilities

This Rod Triplett built home was built in 1999 and has been lovingly maintained ever since by the original owners. Perfectly positioned on an elevated block you catch views of the estuary from the verandah and rooms at the front of the home.

The master bedroom is located at the front, with 3 bay windows to capture the views, large ceiling fan, WIR and spacious ensuite with a separate toilet.

Behind a sliding door is the remainder of the home with three good bedrooms, two of which overlook the pool. The family bathroom is centrally located with bath, fully screened shower and vanity finished in light green and cream tiles. A large laundry provides the perfect workspace with plenty of bench space, overhead cupboards, a walk in linen press and a sa

For more details please visit :

<https://www.summitbunbury.com.au/4735230>

Price: \$450000

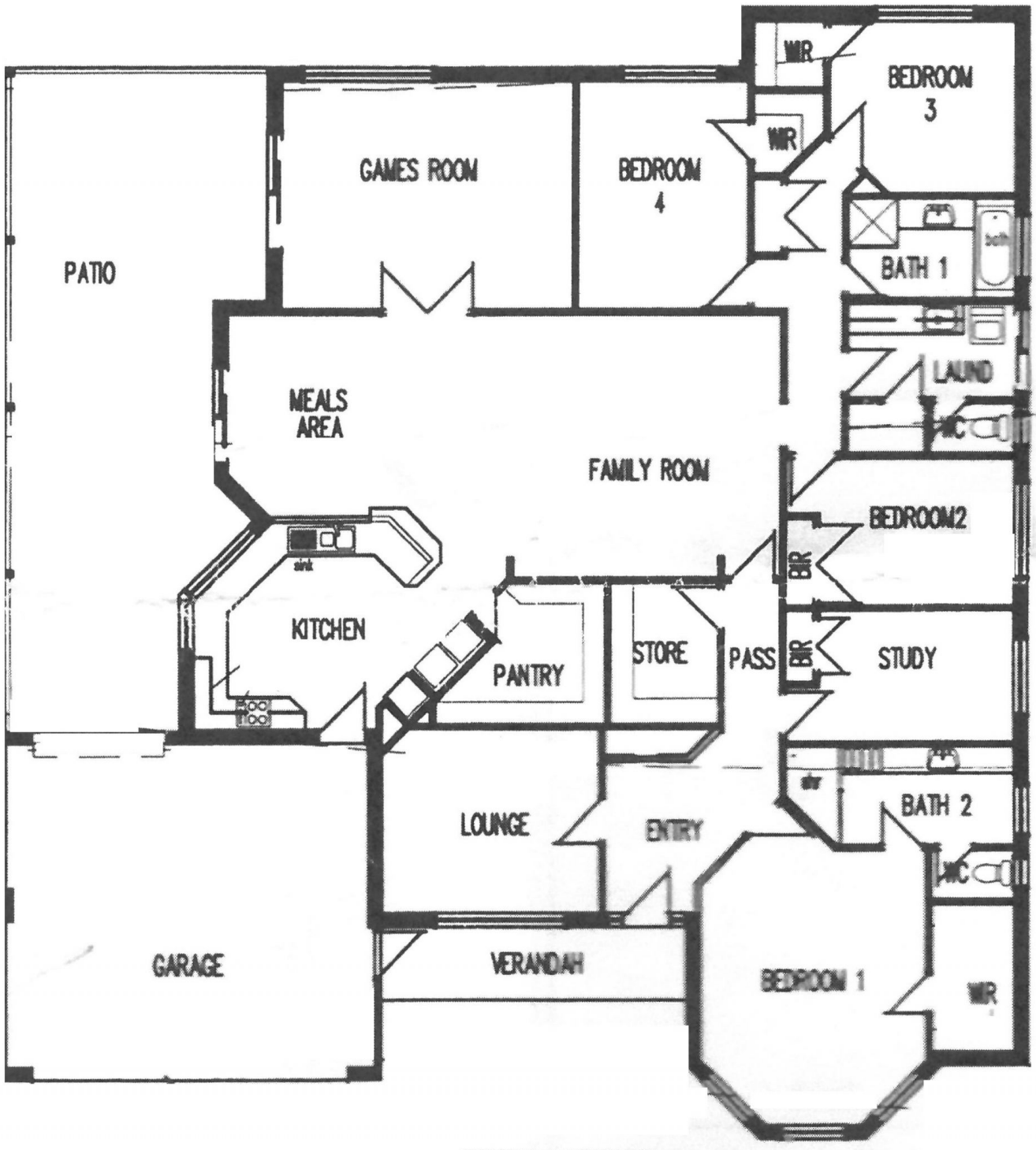
Council Rates: \$1,819.00/year (approx)

Water Rates: \$1,176.00/year (approx)



Ruth Nandapi

0419 955 965



12 Wakefield Crescent

Australind, WA

