



3 Portillo Lane Binningup, WA



3



2



2

Coastal Dream

Please do not wait for a home open if you wish to view the property. Please contact Ruth so that we can get you through by appointment.

Perfectly positioned across from the park this 2017 built home is looking for new owners. Immaculately presented inside & out, the home has been carefully designed to encapsulate the relaxed seaside lifestyle that Binningup has to offer.

Step through the oversized front door & you will find:

- As you move towards the heart of the home there is a shoppers entrance from the garage & also a large walk in storage cupboard.
- The open planned living oozes tranquility & relaxation. The timber look vinyl floors extend through this area & are complemented by the sheer curtains. A tile fire provides heating & that feeling of old fashioned comfort. There is plenty of room for both dining & loun

For more details please visit :

<https://www.summitbunbury.com.au/4773190>

Price: Offers Above \$450,000

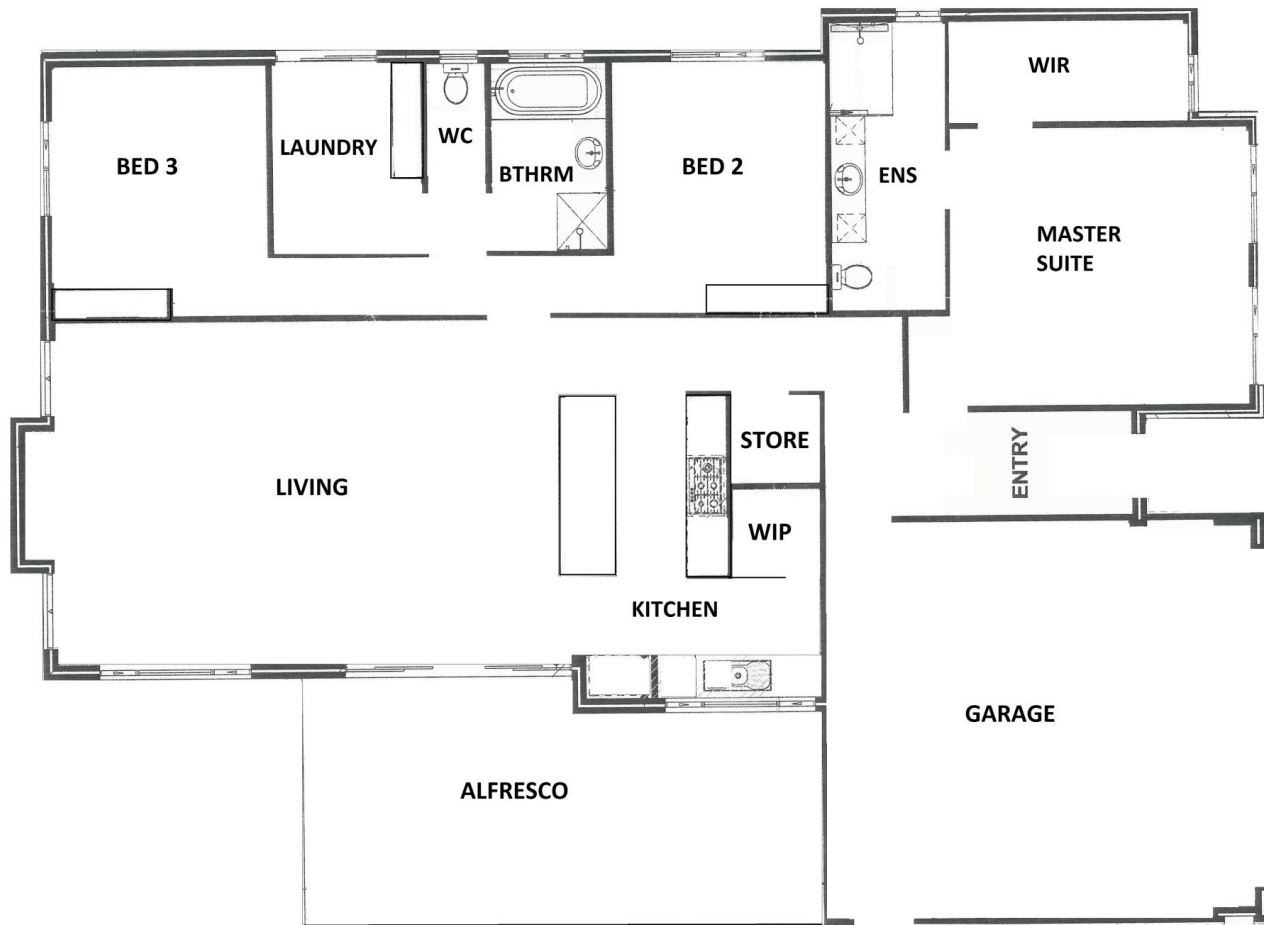
Council Rates: \$1,690.00/year (approx)

Water Rates: \$1,353.00/year (approx)



Ruth Nandapi

0419 955 965



3 Portillo Lane

Binningup, WA

