



Lot 2 Mosedale Avenue Usher, WA

THE FLYNNWOOD ESTATE - STAGE 1 RELEASE

The Flynnwood Estate is a community for everyone. It offers a variety of options to suit every lifestyle - from spacious family sized lots with generous frontages to lower maintenance cottage lots.

Flynnwood Estate has everything on your doorstep and is close enough to the town centre when you need it, and far enough away for you to unwind.

Set within a natural landscape the Flynnwood Estate is part of a vibrant wider community with schools, major shopping centres, public transport and the CBD just minutes away and the coast and beach in easy reach.

With this, The Flynnwood Estate is offering Full Fencing included & Front Landscaping to the value of \$1,500 for the next 6 blocks sold!

Flynnwood Estate is the right choice for your family today and in the future.

Price: \$150,000

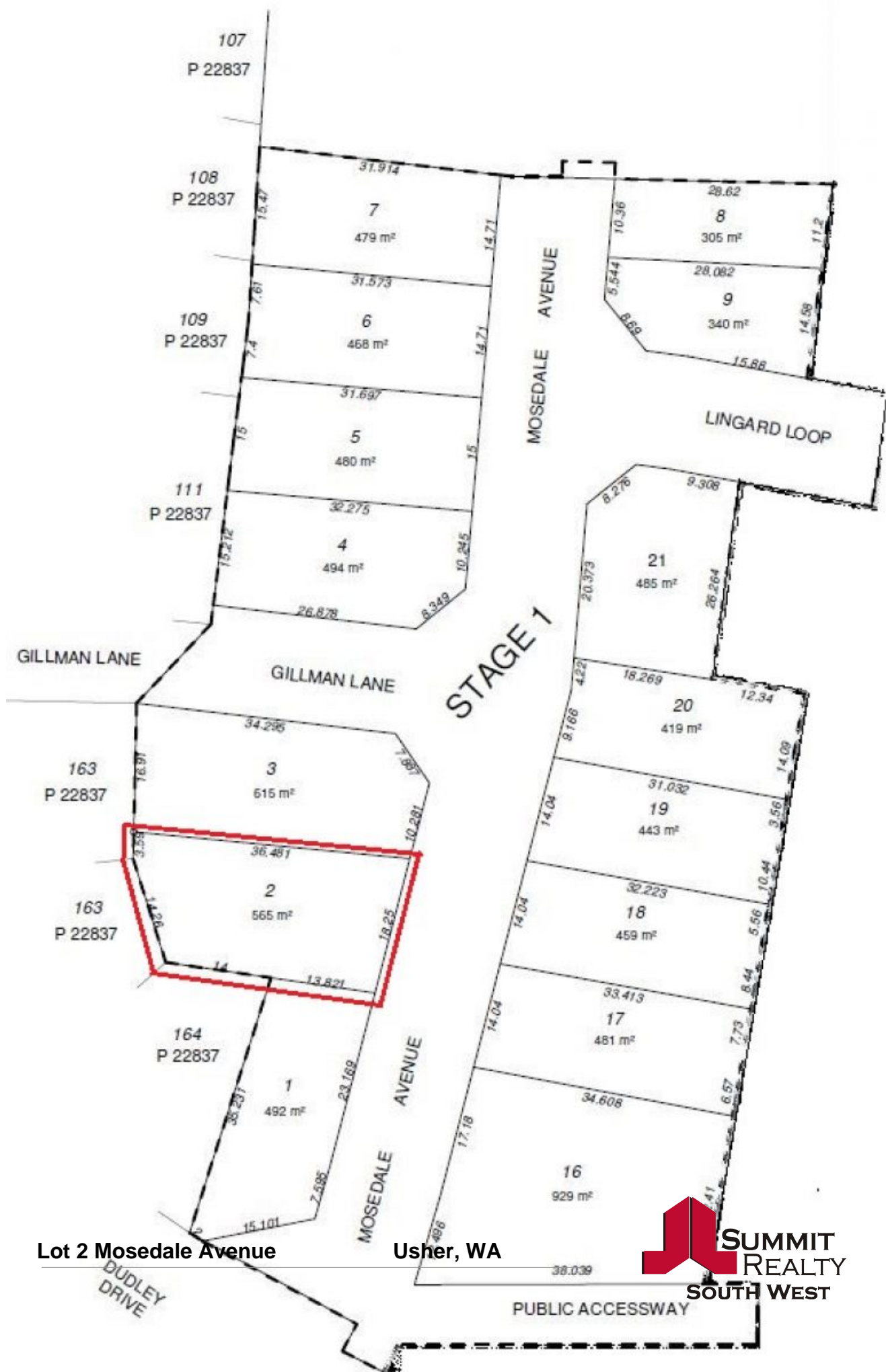


Tim Cooper

0437 068 028

For more details please visit :

<https://www.summitbunbury.com.au/4815456>



Lot 2 Mosedale Avenue

Usher, WA

