



5 A'Dale Way Dalyellup, WA

 4
  2
  2

ONE FOR THE FAMILY

Sitting on a 688m² parcel of land and just a short drive to Dalyellup Shopping Centre is this welcoming, four bedroom and two bathroom home. Boasting a separate front lounge, a large open plan kitchen/dining area with ample bench and cupboard space and even bigger backyard with an undercover patio, this house is perfect for the whole family. Call Exclusive Selling Agent Tim Cooper today to arrange a viewing!

Property features include:

- Separate front lounge room
- Vast open plan kitchen and dining area with ample bench and cupboard space
- Master bedroom with ensuite
- Three minor bedrooms all with carpeted flooring
- Second bathroom including a bath
- Situated just a short drive to Dalyellup Shopping Centre, the Dalyellup beach and a short

For more details please visit :

<https://www.summitbunbury.com.au/4869914>

Price: \$308000

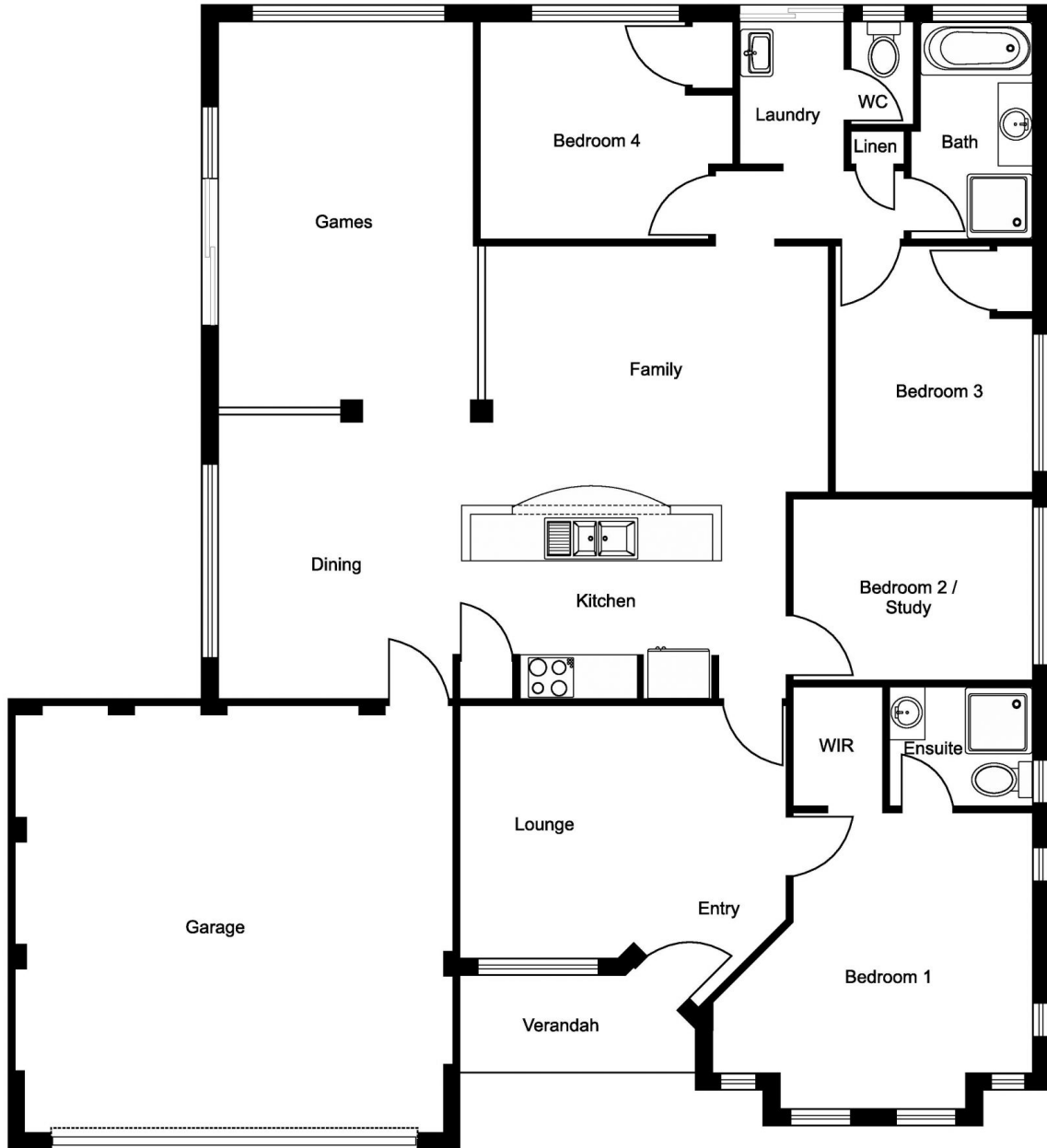
Council Rates: \$2,188.00/year (approx)

Water Rates: \$931.00/year (approx)



Tim Cooper

0437 068 028



5 A'Dale Way

Dalyellup, WA

