



236A Spencer Street South Bunbury, WA

 3  2  2

STYLISH, LOCK & LEAVE SANCTUARY!

Property features you'll love:

Quality stone benchtops throughout

Light and bright open plan living and dining area with built-in buffet cabinetry, high ceilings, stunning flooring and access to the Alfresco and backyard

The kitchen boasts a double oven, undermount double sinks, breakfast bar, bin drawers, pot drawers, overhead storage and shelves, walk in pantry and a stunning neutral toned glass splashback

Spacious master bedroom suite has a massive walk in robe with his and hers built in drawer units, gorgeous Ensuite includes a separate WC, double shower including ceiling mounted rain head

Two spacious carpeted minor bedrooms, both with built in robes

Side access

Price: \$433000

Council Rates: \$2,268.39/year (approx)

Water Rates: \$245.75/year (approx)



Tim Cooper

0437 068 028

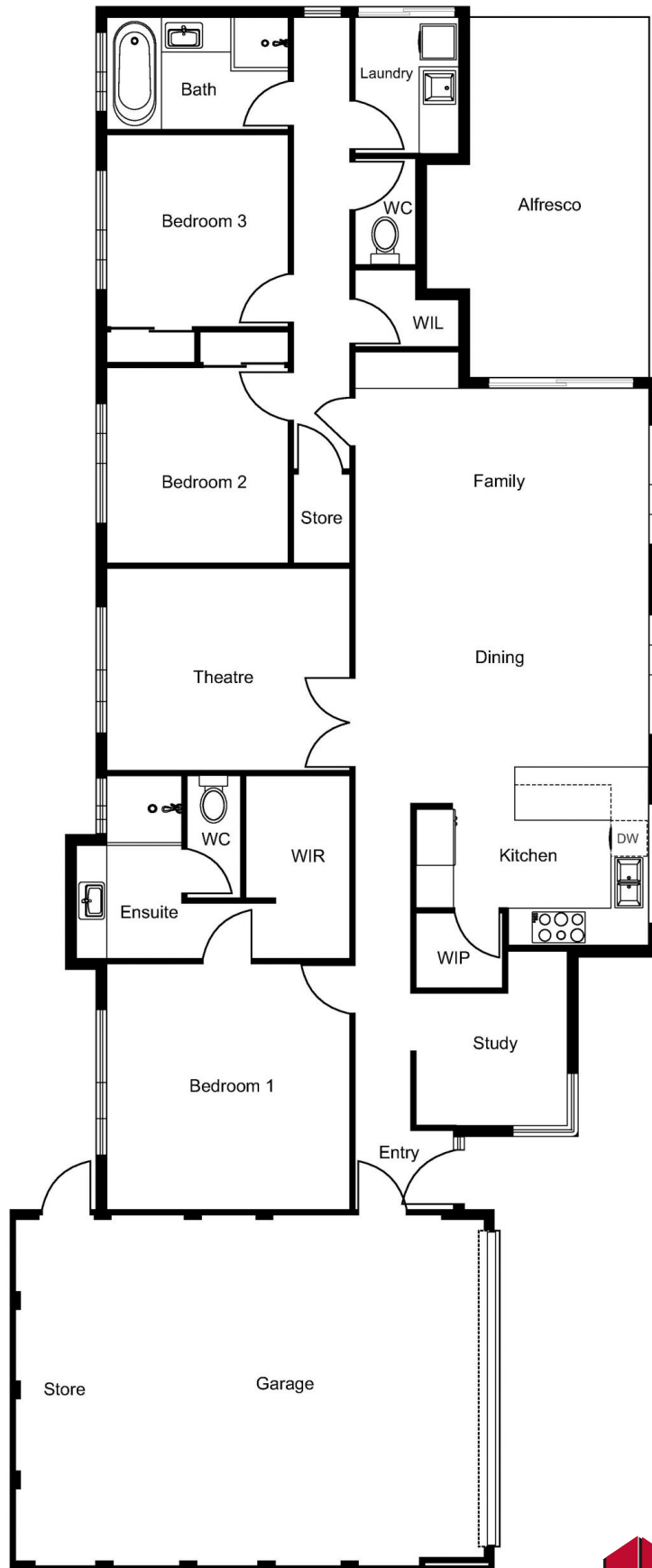


Tim Cooper

0437 068 028

For more details please visit :

<https://www.summitbunbury.com.au/5152983>



236A Spencer Street

South Bunbury, WA

