



3 Emerald Way Australind, WA

 4
  2
  2

## Affordable home in a great location

Step inside and discover everything you are looking for in a family home with this generous 4-bedroom, 2-bathroom home.

With a convenient and practical layout featuring open plan living areas, spacious bedrooms, formal lounge room, impressive outdoor entertaining areas all sitting on a large 777m<sup>2</sup> enjoying easy side access through double gates or drive through double garage to a large workshop.

This is the ideal home for the growing family being perfectly situated in the family friendly estate of Treendale, walking distance to the popular Treendale Primary School and close proximity to Treendale Shopping.

Other features:

**Price:** Offers over \$369,000

**Council Rates:** \$2,178.23/year (approx)

**Water Rates:** \$1,230.78/year (approx)



**Lorraine Grassie**

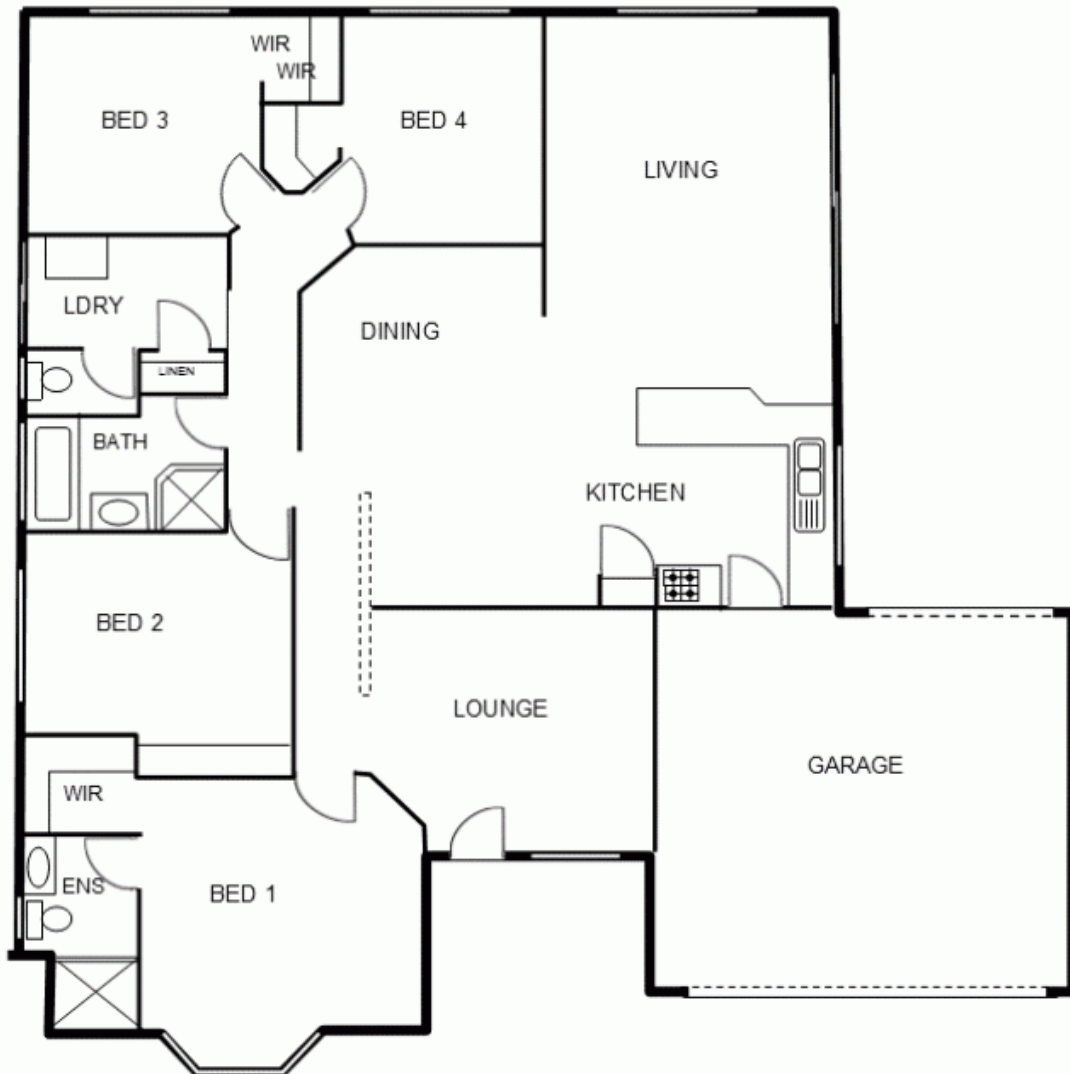


**Adrian Triplett**

For more details please visit :

<https://www.summitbunbury.com.au/5237617>

0419 971 888



This plan has been prepared for marketing purposes only. Whilst every care is taken in the preparation of this plan, measurements, angles and positioning of doors/windows may not be accurate. Interested parties are strongly advised to undertake their own checks when establishing the suitability for furniture etc.. Not to scale.

**3 Emerald Way, Australind**