



35 Tuscany Green Binningup, WA

4 2 2

## Sun, Sea & Room for the Shed

The lovely 2014 built home has been strategically positioned on the block to give you rear access and provide plenty of room for the additional of a good sized shed. A rare find in Lakewood Shores, don't miss the chance to secure this home.

The lovely portico with timber trim matching the garage door catches your eye as you approach the home. The master bedroom is located at the front with two windows for natural light, his and hers robes which you walk through and an ensuite behind a sliding door. The ensuite has a large screened shower, wide vanity and a toilet.

The large galley style kitchen forms the hub of the home with a large island bench which provides a generous food preparation space as well as housing the sink and dishwasher. The cooking is taken care of with an extra wide oven, gas hotplate & stainless steel rangehood. A large fridge recess and a double pantry are housed at the far end of the kitchen. The

For more details please visit :

<https://www.summitbunbury.com.au/5283646>

**Price:** \$430000

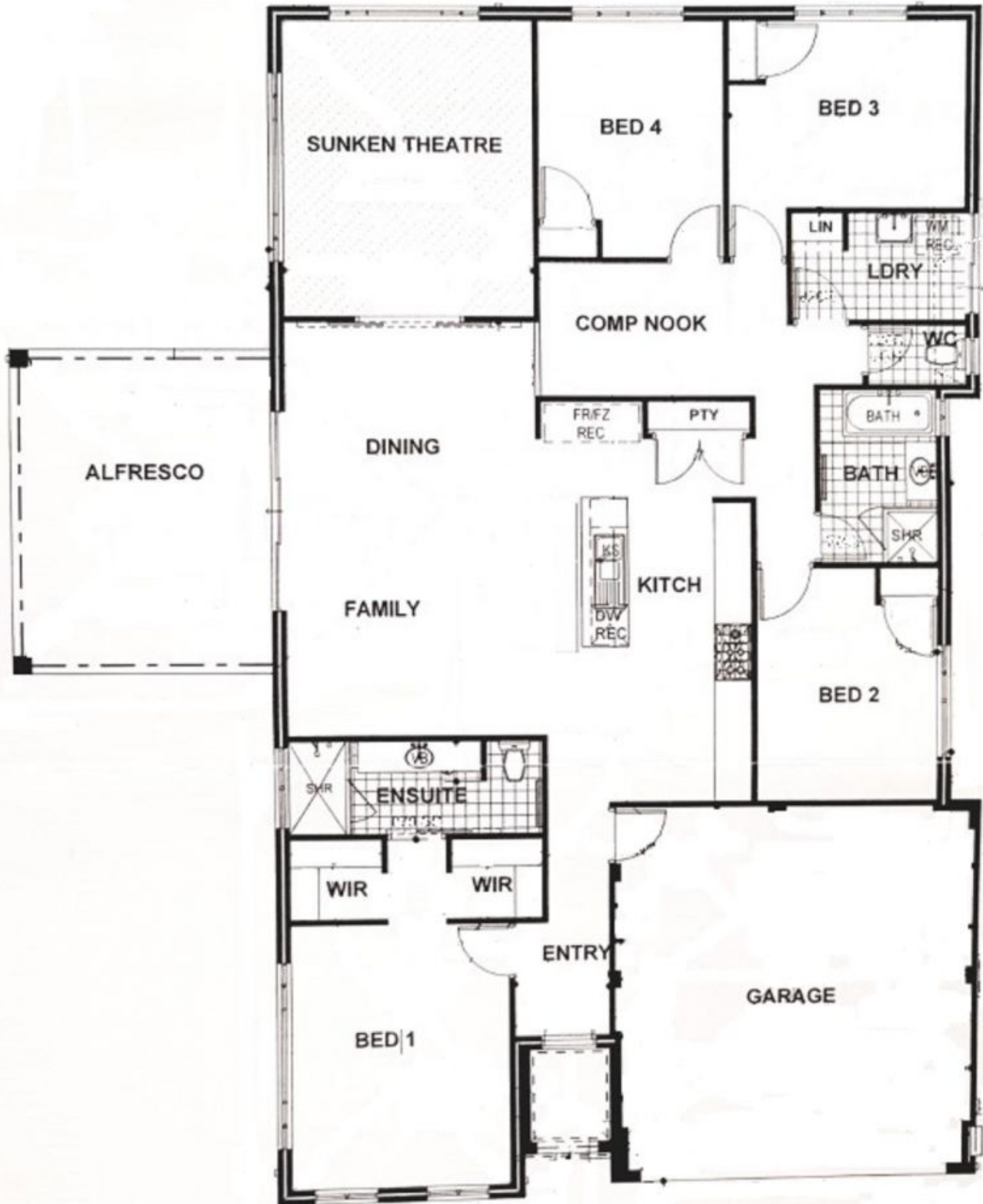
**Council Rates:** \$1,793.05 p/q

**Water Rates:** \$1,463.14/year (approx)



**Ruth Nandapi**

0419 955 965

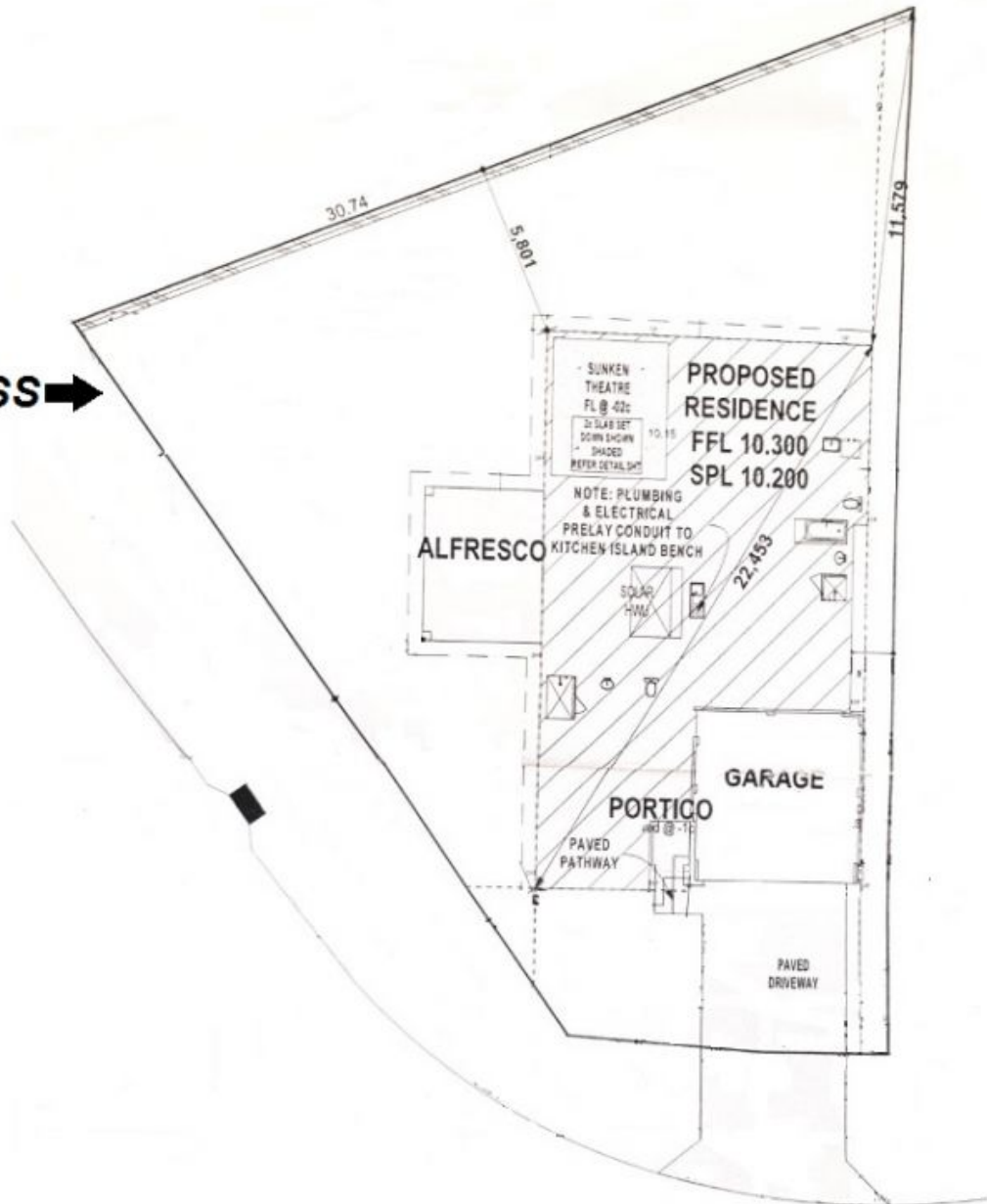


35 Tuscany Green

Binningup, WA



**SIDE ACCESS** →



35 Tuscany Green

Binningup, WA

