



7 Athena Street Dalyellup, WA



4



2



2

Sweet Timeless Retreat

Are you seeking a private haven; an easy-care property in a premiere location- Want to downsize from the big garden but not miniaturise the house- Desire generous proportions and quality finishes in a home that offers easy living- This superbly presented property may just be what you seek.

Behind beautifully kept front gardens lies a subtle but stylish home of surprising proportions. The flow of the layout is easy and seamless, all rooms are comfortably sized and finishes are sumptuous. There is simply no work to be done - this property is move-in-ready!

A gorgeous feature of this home is that all rooms have their own garden view.

Three living spaces consist of an expansive main living & dining zone, roomy lounge with d

For more details please visit :

<https://www.summitbunbury.com.au/5300436>

Price: \$460000

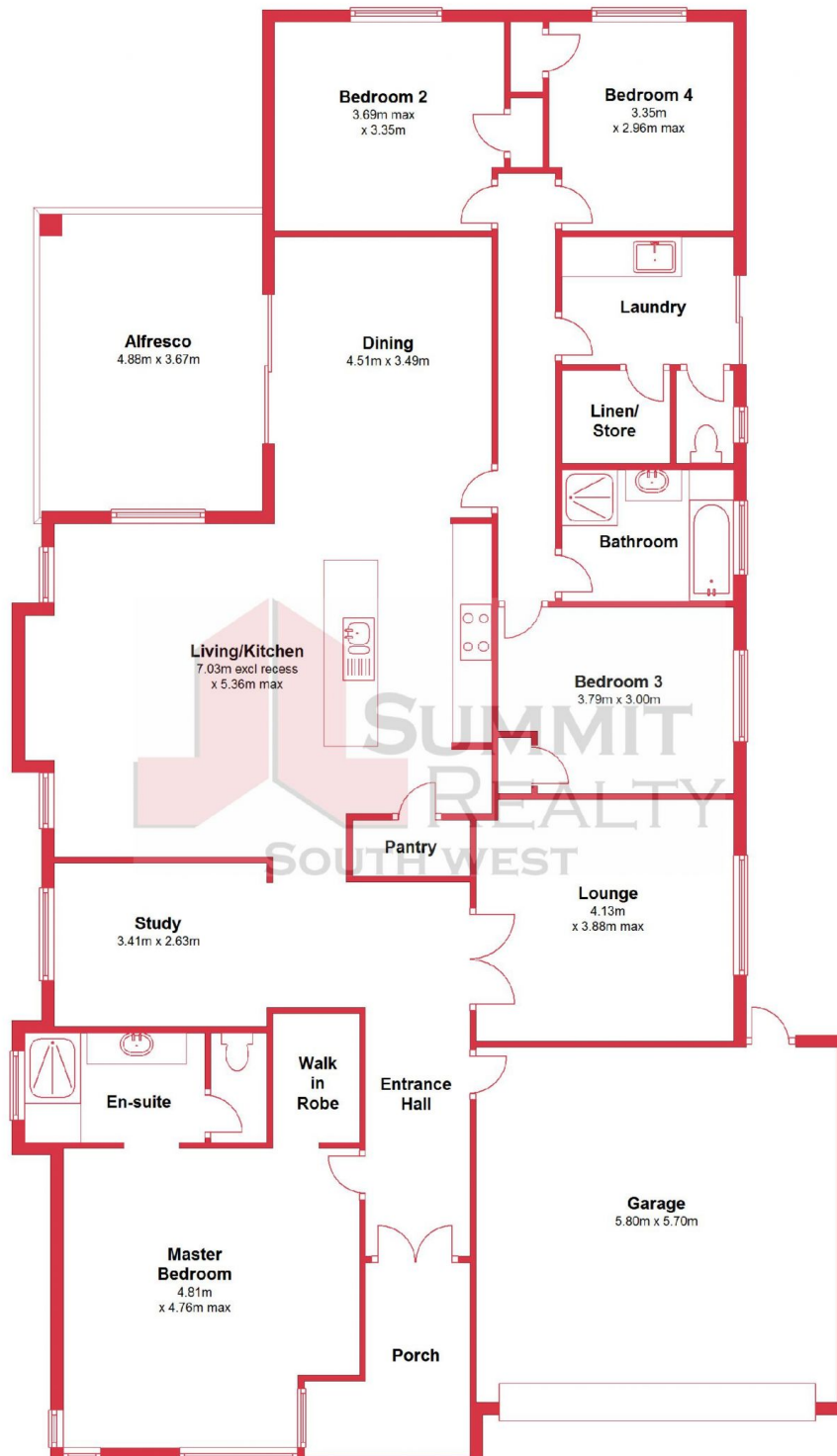
Council Rates: \$2,274.71/year (approx)

Water Rates: \$1,029.06/year (approx)



Lorraine Grassie

Ground Floor



This plan has been prepared for marketing purposes only. Whilst every care is taken in the production of this plan, measurements, angles and positioning of doors/windows may not be accurate. Interested parties are strongly advised to undertake their own checks when establishing the suitability for furniture etc. Not To Scale.
Plan produced using PlanUp.

7 Athena Street, Dalyellup

7 Athena Street

Dalyellup, WA

