



14 Lee Street South Bunbury, WA

4 2 2

SPECTACULAR BESPOKE SOUTH BUNBURY RESIDENCE

Property features you'll love:

- Large boardwalk style entry to feature front door
- Spacious master retreat features walk in robe, stunning ensuite with double shower heads, double vanity with plenty of storage space
- Three secondary bedrooms are large in size and feature built in robes
- Main bathroom is modern and has separate shower and bath as well as powder room with toilet across the hall
- Separate theatre/second living space
- Functional laundry with stone benches and plenty of storage
- Second toilet and powder room in laundry area
- Open plan dining and living room giving access to the outdoor alfresco
- Plantation shutters throughout the home

For more details please visit :
<https://www.summitbunbury.com.au/5325959>

Price: \$710000

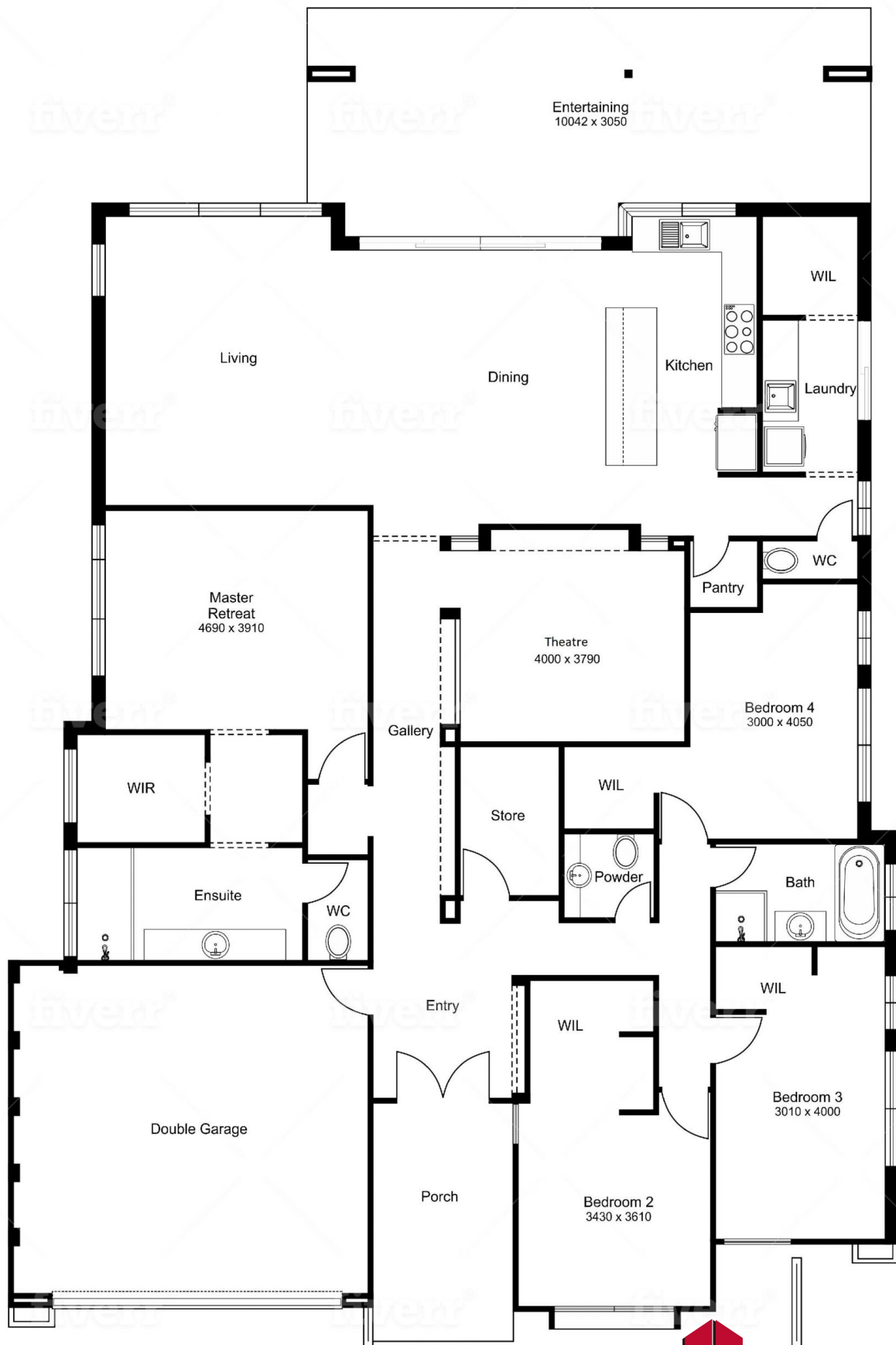
Council Rates: \$2,295.04/year (approx)

Water Rates: \$251.89/year (approx)



Tim Cooper

0437 068 028



14 Lee Street

South Bunbury, WA

