



5 Koulberry Road Dalyellup, WA



5



3



2

## STYLE, CLASS & SOPHISTICATION!

### GROUND FLOOR:

Spacious double door entrance hall

Double door front lounge which can open up onto the front veranda

Open plan living and dining area with access onto the outdoor backyard entertaining

Massive kitchen with space for a double door fridge, plenty of bench and cupboard space, double sinks and breakfast bar

Three of the secondary bedrooms are large in size and have built in robes

The fourth secondary bedroom/ guest bedroom as a walk in robe and large ensuite with bath and shower and has double door access to the veranda

**Price:** \$820000

**Council Rates:** \$2,534.74/year (approx)

**Water Rates:** \$1,119.19/year (approx)



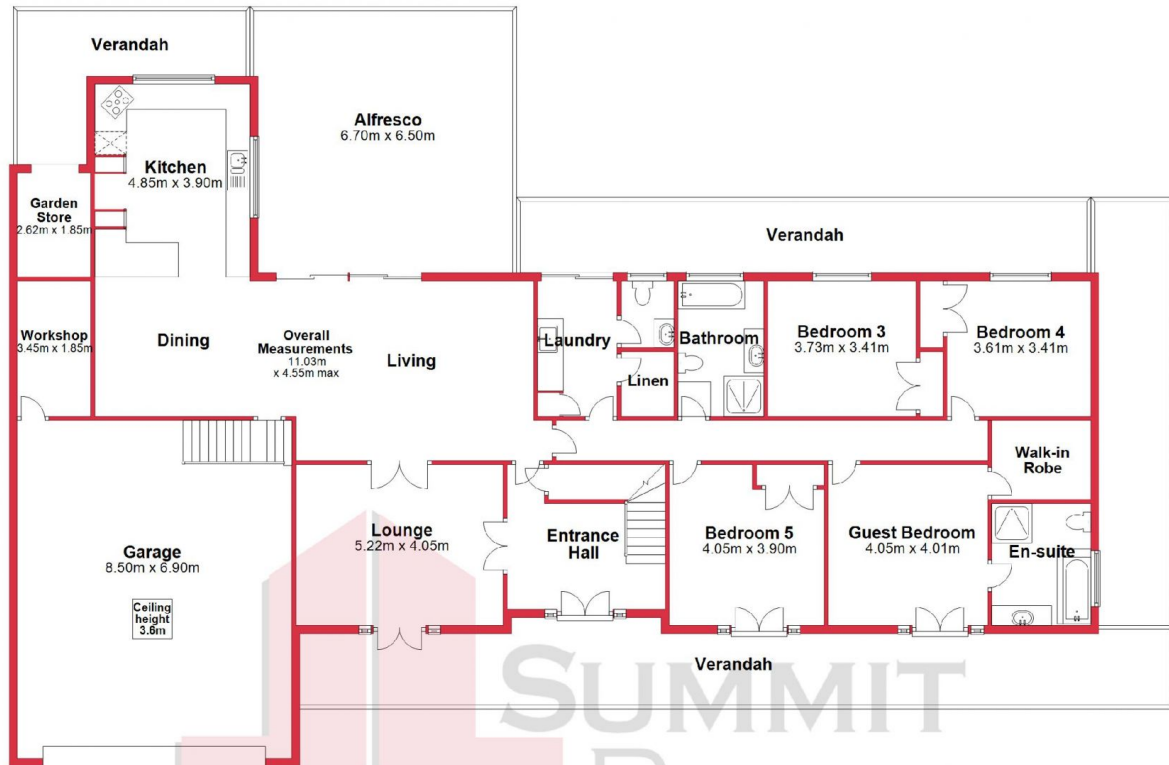
**Tim Cooper**

0437 068 028

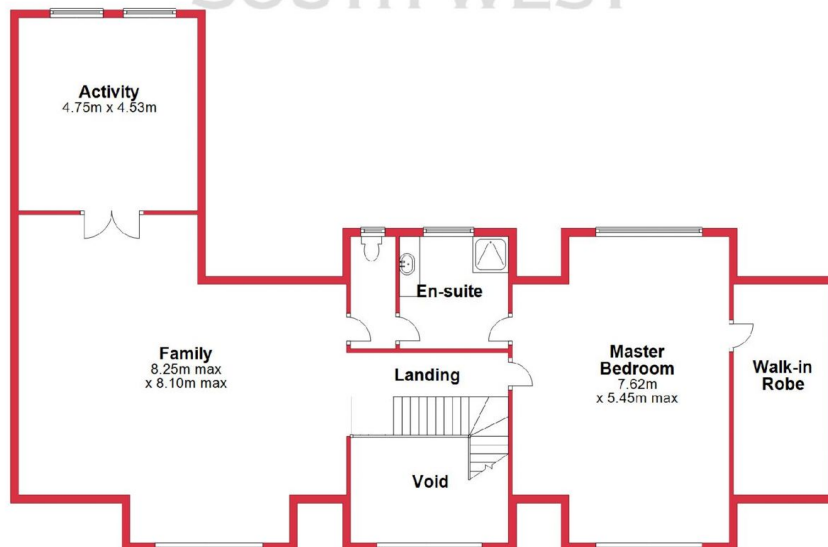
For more details please visit :

<https://www.summitbunbury.com.au/5374545>

## Ground Floor



## First Floor



This plan has been prepared for marketing purposes only. Whilst every care is taken in the production of this plan, measurements, angles and positioning of doors/windows may not be accurate. Interested parties are strongly advised to undertake their own checks when establishing the suitability for furniture etc. Not To Scale.  
Plan produced using PlanUp.

5 Koulberry Rd, Dalyellup

5 Koulberry Road

Dalyellup, WA

