



17 Jupiter Drive Australind, WA

 4
  2
  2

## The Complete Package!

If you've been searching for a home that really has something for everyone, then look no further than 17 Jupiter Drive. A massive family home, oversized alfresco, side access and a big shed.

Take a step through the double doors and you will love the openness that extends beyond the entry and through to the huge, light-filled open plan living area.

The living area is expansive, with 31c ceilings, quality vinyl plank flooring, a wood fireplace, and beautiful large windows that allow the natural light to flood in.

Other interior features include:

For more details please visit :  
<https://www.summitbunbury.com.au/5930856>

**Price:** Offers Over \$519,000

**Council Rates:** \$2,395.00/year (approx)

**Water Rates:** \$1,397.00/year (approx)



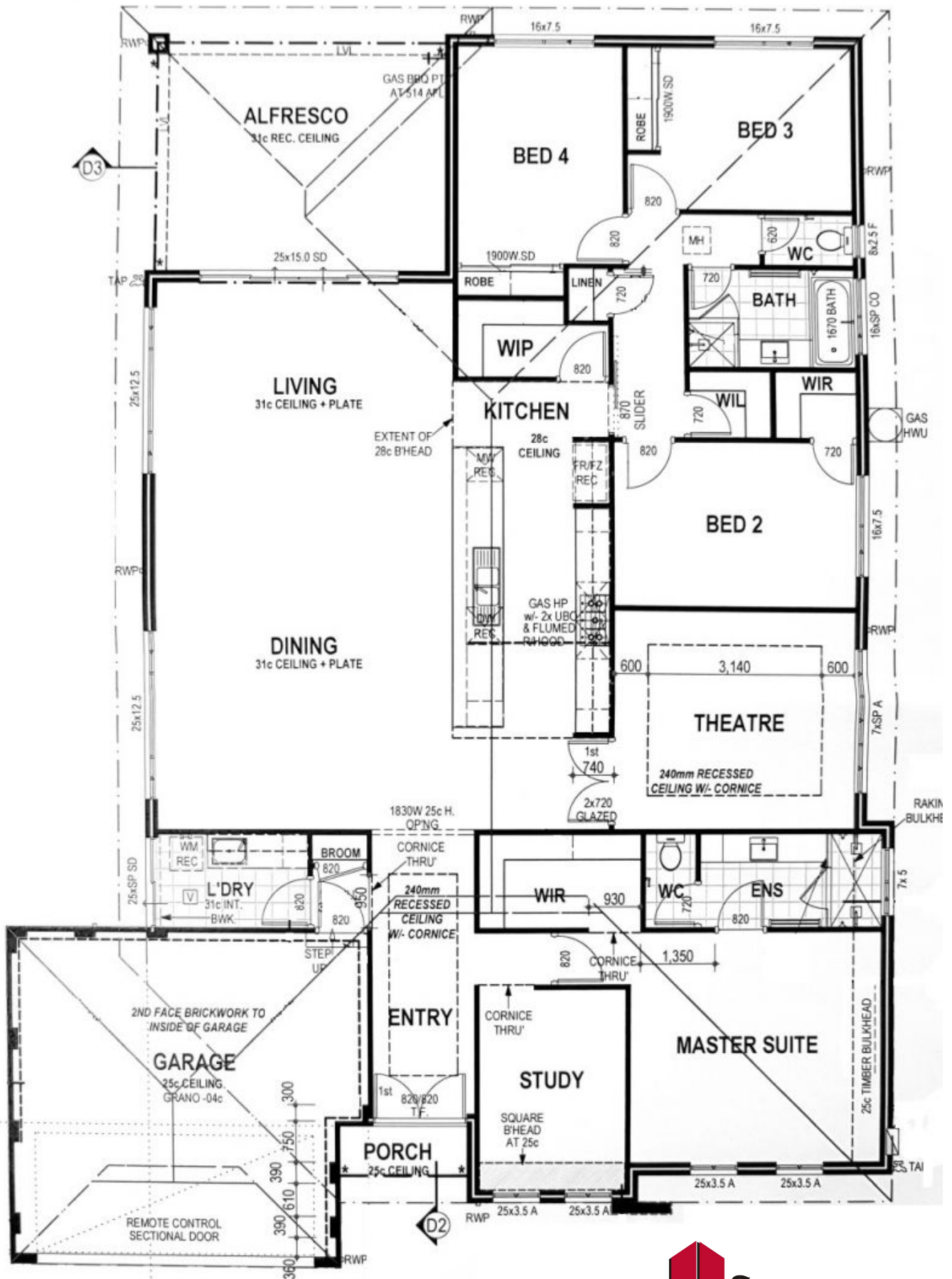
**Ruth Nandapi**

0419 955 965



**Ruth Nandapi**

0419 955 965



17 Jupiter Drive

Australind, WA

