



10 Kookaburra Close Myalup, WA 
 4  2  2

## Country Charm

From the front gate you will never guess what awaits you within this lovely lifestyle property. Escape to the idyllic surrounds of Kookaburra Close and live a quiet country lifestyle with all the conveniences you need only a short drive away. The best part is that you cant see any of your neighbours and the front of the home has expansive, uninterrupted views across the paddocks.

Built by the Rural Building Company in 2004, the home has been perfectly positioned, facing north to capture the winter sun and the design of the home maximizes the views of the outside and the gardens.

Inside the front door you will find:

- Inviting octagonal freeform living area that has a timber pole as a feature in the middle of the room. The combination of the redgum plank flooring, exposed beams and big windows

For more details please visit : <https://www.summitbunbury.com.au/5942732>

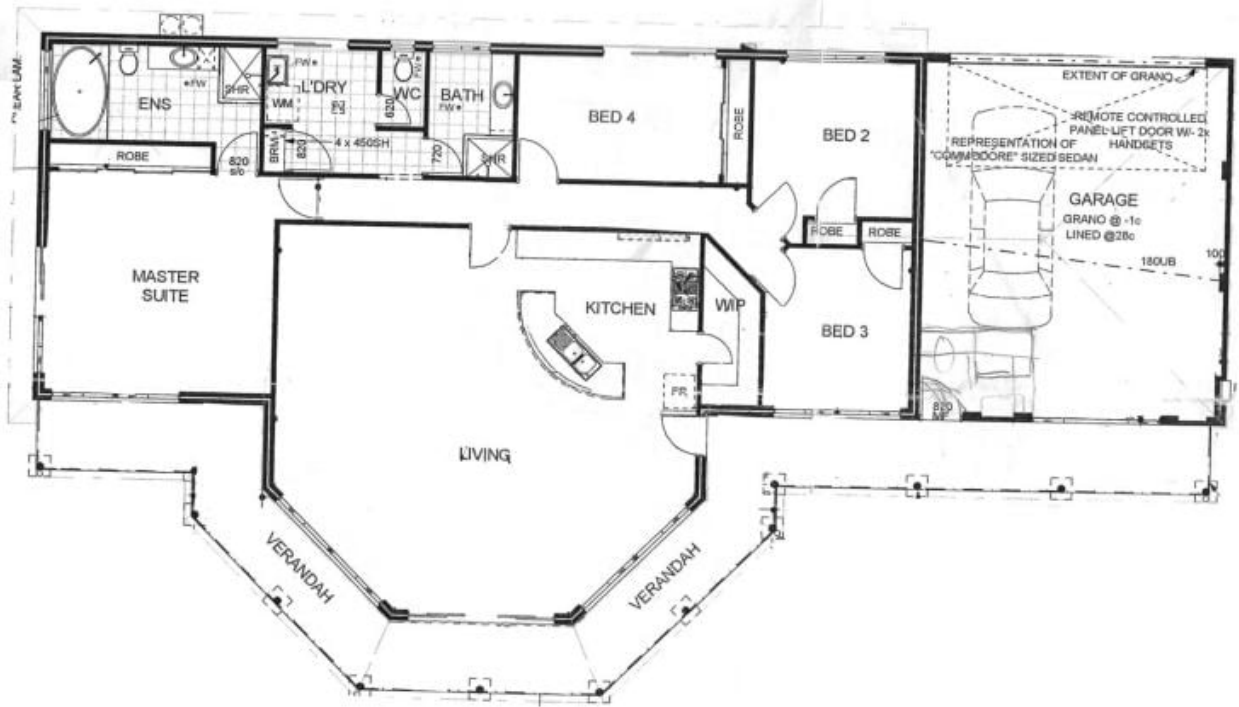
**Price:** Sold by Ruth Nandapi

**Council Rates:** \$1,472.00/year (approx)



**Ruth Nandapi**

0419 955 965



10 Kookaburra Close

Myalup, WA

