



11 Hampton Court Collie, WA

 3  2  1

JUST MOVE IN

This beautifully presented home will impress upon inspection from the gardens to the home interior to the well designed patio to the huge veggie garden areas. The home is well located close to schools and approximately 1.5km to the CBD hub and the many amenities the town has to offer.

Property Features Include:

- Easy care brick & tile home sitting on 721m2
- 3 bedrooms all with built in robes
- Spacious lounge/dining area with ducted evaporative throughout
- Semi ensuite bathroom with bath overhead shower
- Open plan kitchen, family and dining area with laminate flooring and spilt

Price: \$250000

Council Rates: \$1,684.00/year (approx)

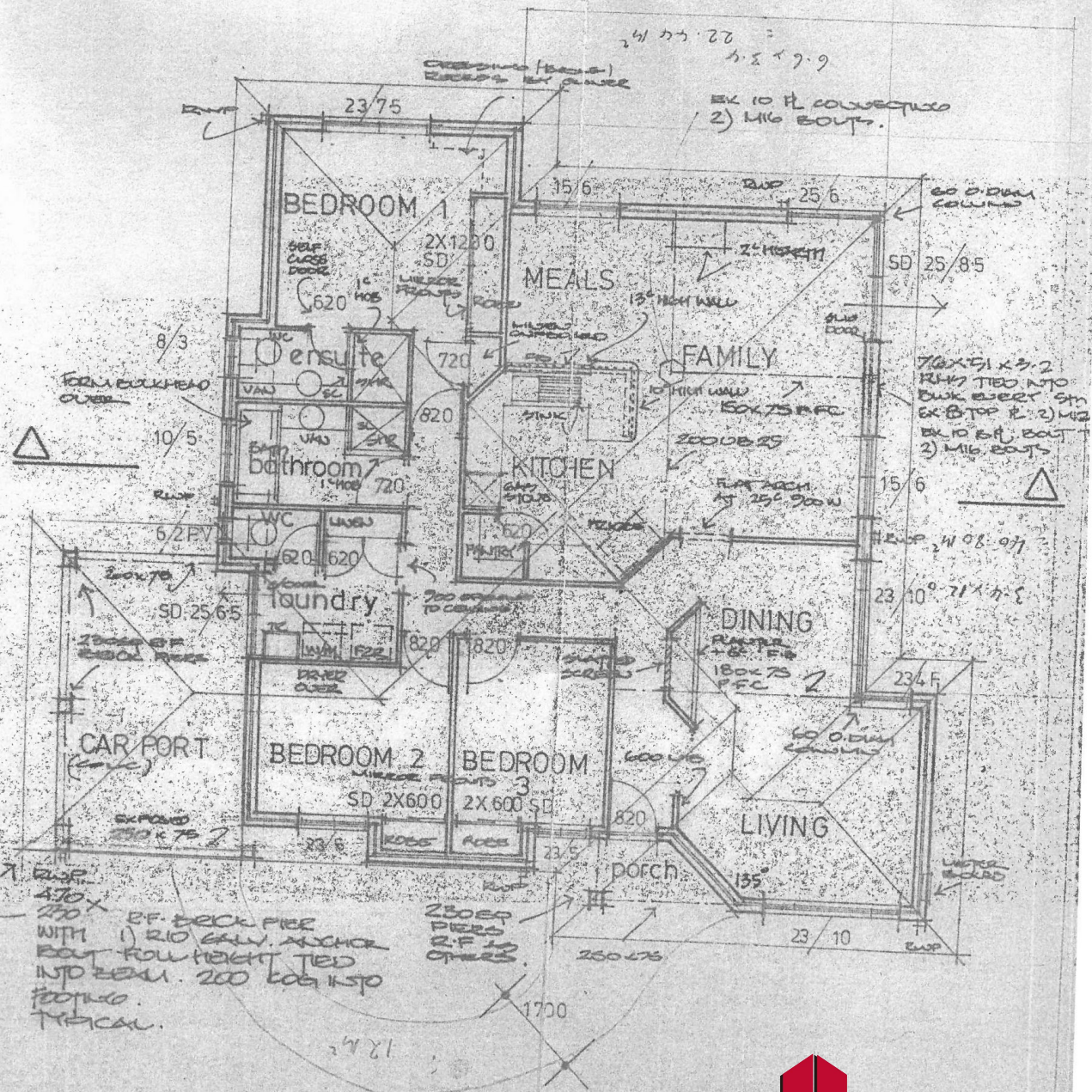
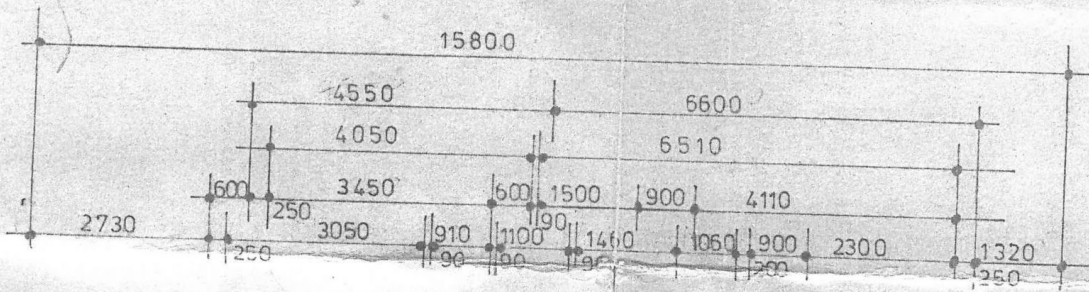
Water Rates: \$1,463.00/year (approx)



Lorraine Grassie

For more details please visit :

<https://www.summitbunbury.com.au/5944119>



EXP. 470 x 250 EF. DECK PIECE WITH 1) 210 GALV. ANCHOR BOLT FULL HEIGHT TIED INTO EXIST. 200 LOG IN SP. FOOTING. TYPICAL.

11 Hampton Court

Collie, WA

