



16 Ryeland Avenue Eaton, WA

 4
  2
  2

The perfect family home to create memories in for years to come.

**PROPERTY FEATURES INCLUDE:**

- Large driveway with extra parking space and double automatic garage
- Immaculately maintained front lawns & gardens, stunning decked front porch
- Spacious open plan living and dining area
- Functional kitchen with plenty of bench and cupboard space, double sinks, large pantry, and three seater breakfast bar
- Double door theatre or games room which is carpeted
- Spacious master bedroom with sliding door robes, great sized ensuite with large shower and vanity
- Modern main bathroom with a separate shower & bath
- Practical laundry with a huge linen press
- The backyard is perfect for entertaining and features a good undercover patio space & ceil

For more details please visit : <https://www.summitbunbury.com.au/6208017>

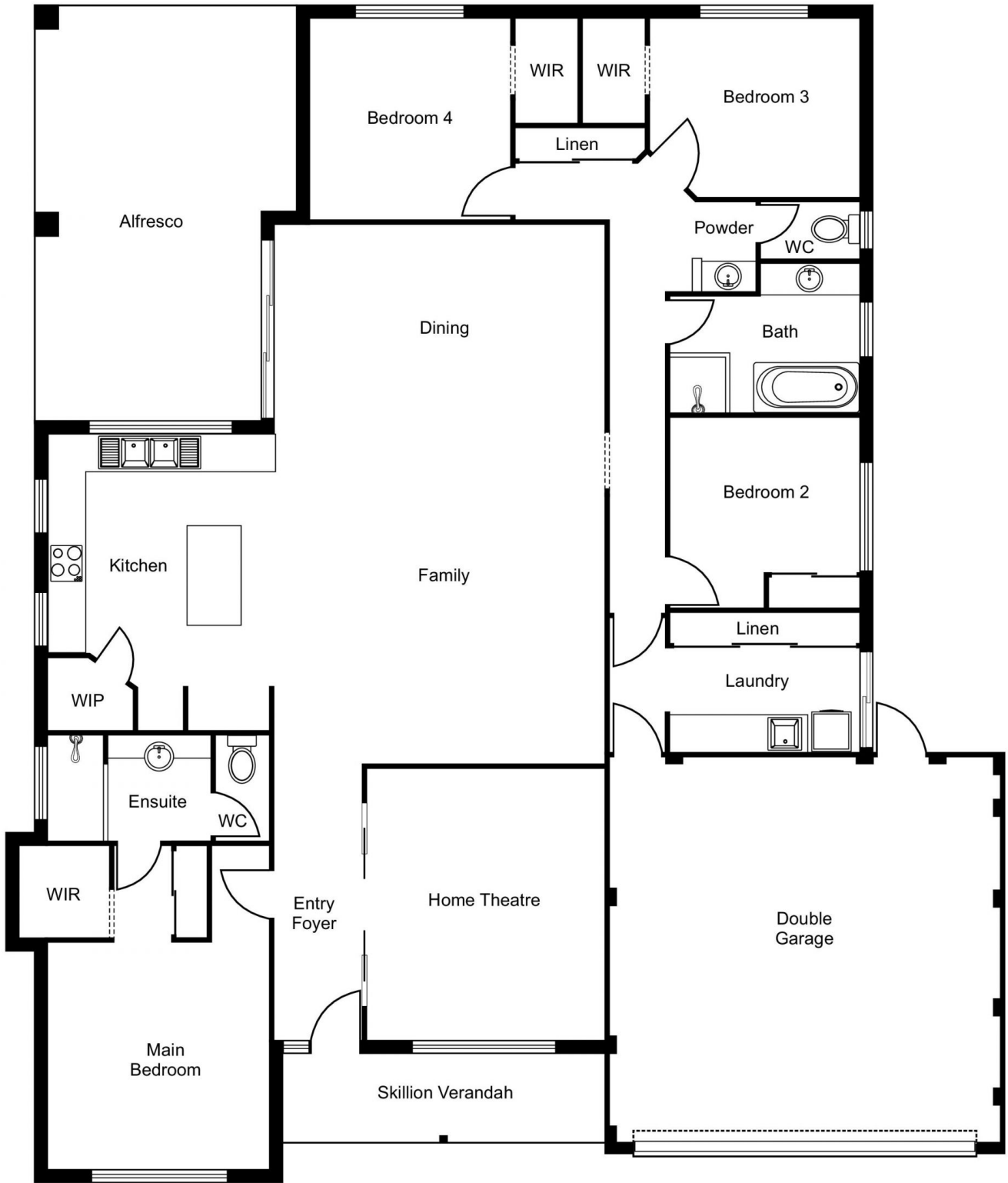
**Price:** From \$480,000

**Water Rates:** \$1,463.00/year (approx)



**Tim Cooper**

0437 068 028



16 Ryeland Avenue

Eaton, WA

