



55 Turnberry Way Pelican Point, WA



3



2



2

MEDITERRANEAN MASTERPIECE ON THE GREENS

Imagine yourself in the countryside of Italy, with Tuscan rendered walls and terracotta tiles...that's exactly what you'll find at this magnificent property in the well sought after area of Pelican Point. From the interior to the exterior, this residence has been transformed into a work of art including a stunning courtyard with landscaped gardens, veggie garden and the front 9 at your back door, the golfing enthusiasts will be in their element!

This huge 3 bedroom 2 bathroom home with large study, is situated on a generous 733sqm parcel of land that is so close to the Collie River, the estuary, Bunbury farmers market, Eaton Fair Shopping Centre, and the city of Bunbury itself. You'll never find yourself looking for something to do with your spare time. Clever design has been used to maximise the sp

For more details please visit :

<https://www.summitbunbury.com.au/6355127>

Price: \$650000

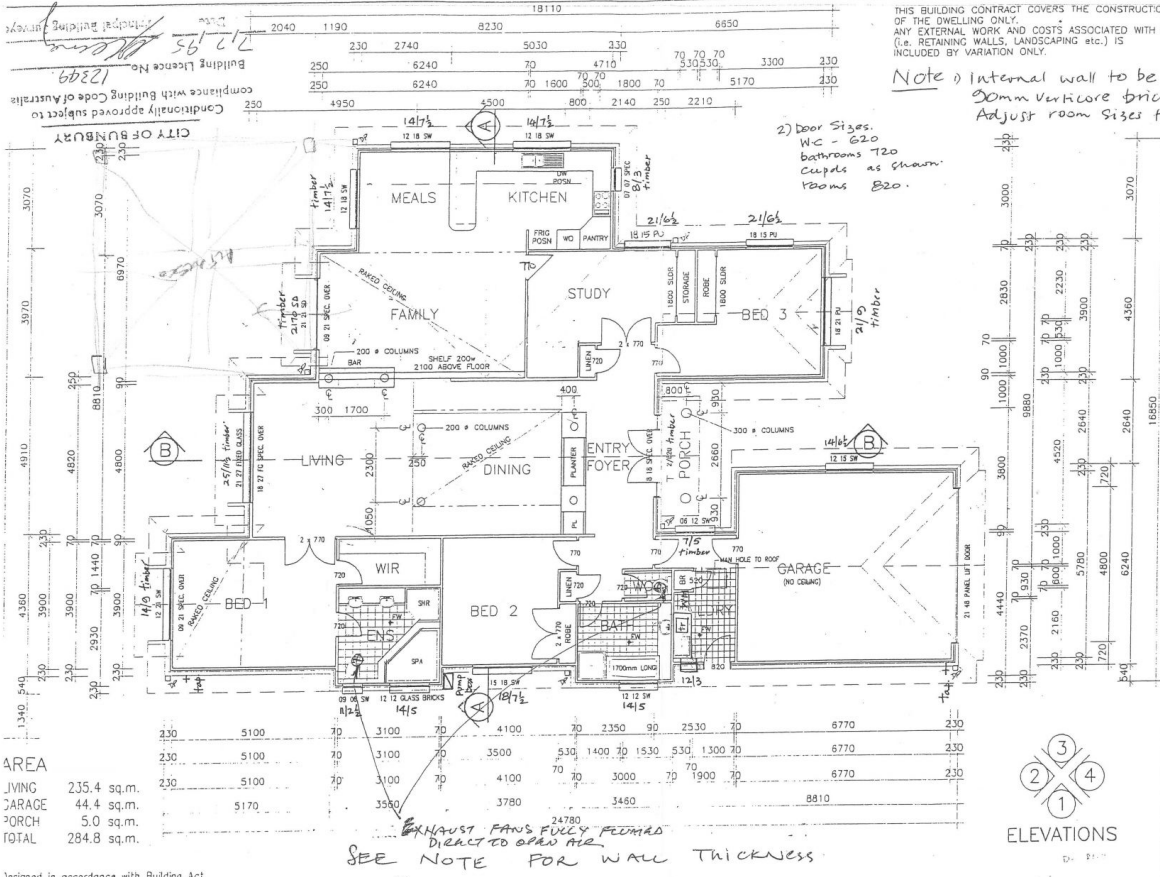
Council Rates: \$2,589.19/year (approx)

Water Rates: \$1,463.15/year (approx)



Tracy Mills

0429 000 887



City of Bunbury
Conditionally approved subject to compliance with Building Code of Australia
Building Licence No. 12389
2/2/95

THIS BUILDING CONTRACT COVERS THE CONSTRUCTION OF THE DWELLING ONLY. ANY EXTERNAL WORK AND COSTS ASSOCIATED WITH IT (i.e. RETAINING WALLS, LANDSCAPING etc.) IS INCLUDED BY VARIATION ONLY.

Note: Internal wall to be 30mm vertical core brick. Adjust room sizes to suit.

2) Door Sizes. WC - 620. Bathrooms 720. Cupbs as shown. Rooms 820.

EXHAUST FANS FULLY PROVIDED DIRECT TO OUTSIDE AIR. SEE NOTE FOR WALL THICKNESS.

Figured dimensions are to take preference over scale.

RIVERA

CONETTI
Horites of Quality (07) 271 4488
© COPYRIGHT: Reproduction in whole or part is strictly forbidden without prior written permission from CONETTI CONSTRUCTIONS P/L

Scale: 1:100
Sheet no. CA
Drawing no. 1
Sheet no. 1

55 Turnberry Way

Pelican Point, WA

