



8A Thompson Place Australind, WA

 3

 2

 2

WON'T BREAK THE BANK ON PRICE

Situated in a quiet family friendly cul de sac this 3 bedroom 2 bathroom duplex home perfect for the investor or family looking for their first home. Offering multiple living areas, a spacious kitchen and double carport plus a large patio area, fantastic for those family BBQ's. This home presents a wonderful opportunity for first home buyers looking to get into a home without breaking the bank. Conveniently located to nearby local schools, sporting grounds and childcare centre.

Property features:

- 3 bedrooms, 2 bathrooms
- Master bedroom with walk in robe plus ensuite
- Study
- Front lounge area
- Spacious kitchen with loads of bench space, built in pantry, single fridge recess, gas o

For more details please visit :

<https://www.summitbunbury.com.au/6387366>

Price: \$279000

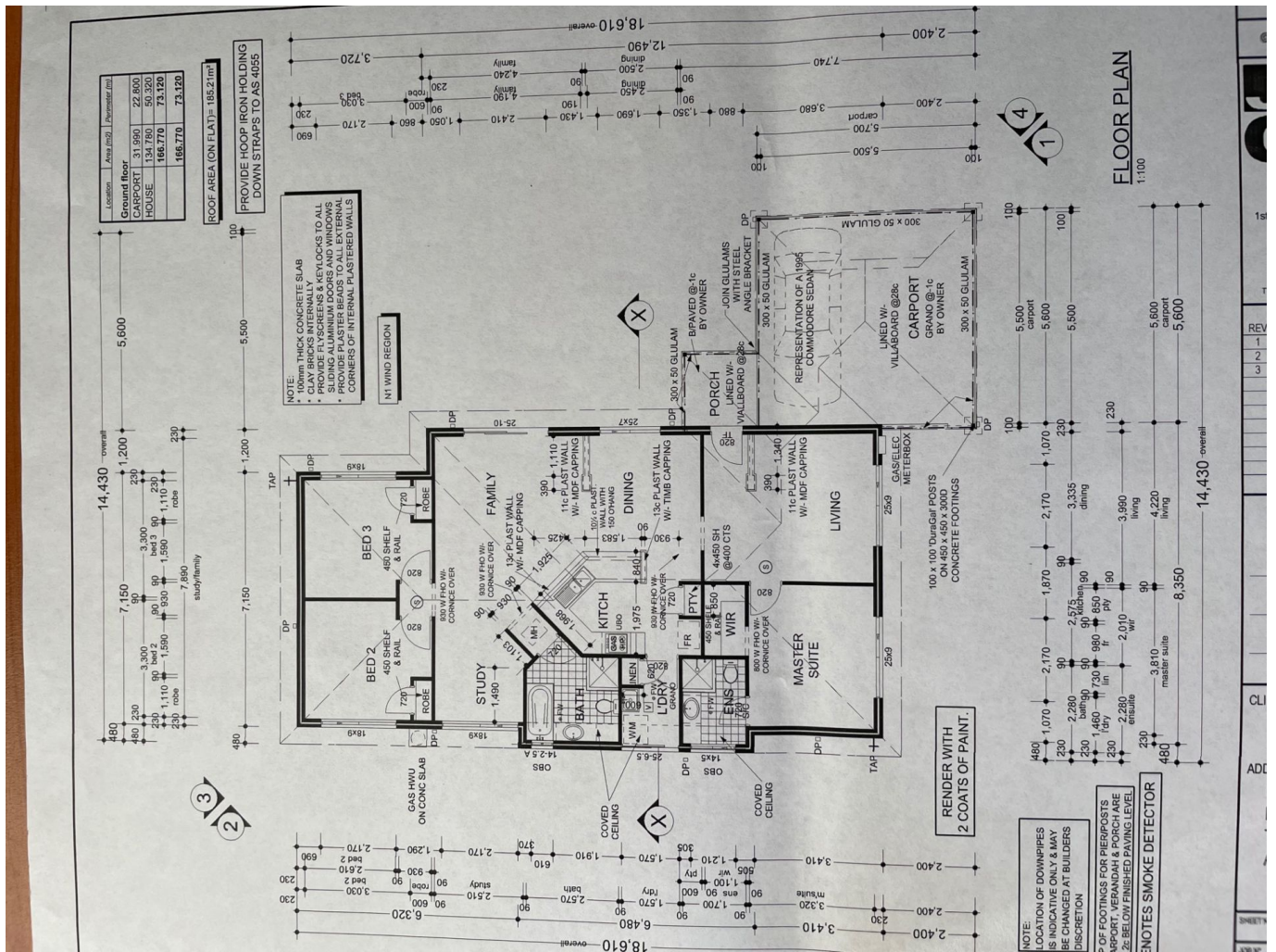
Council Rates: \$1,637.38/year (approx)

Water Rates: \$1,077.12/year (approx)



Tracy Mills

0429 000 887



8A Thompson Place

Australind, WA

