



2 Acona Place Binningup, WA

4 2 3

A Place to Call Home

Built on a corner block, this low maintenance home would be the perfect lock up and leave, permanent home or holiday home. Located in Lakewood Shores, it is an easy walk to the beach, down Valentine Road.

This 2010-built Country Builders home has the following features:

- Wide entry foyer with shopper's access to double garage.
- Generous open plan living area, which leads to sliding doors and the outdoor entertaining area & tiled floors.
- Massive family kitchen with corner pantry, dishwasher, sink overlooking the alfresco and a breakfast bar big enough for all of the family.
- Laundry with walk-in linen press, conveniently located adjacent to the kitchen
- Oversized master bedroom with walk-through robes into an ensuite with fully screened sho

For more details please visit :

<https://www.summitbunbury.com.au/6406092>

Price: REDUCED \$490 000

Council Rates: \$2,201.00/year (approx)

Water Rates: \$1,518.00/year (approx)



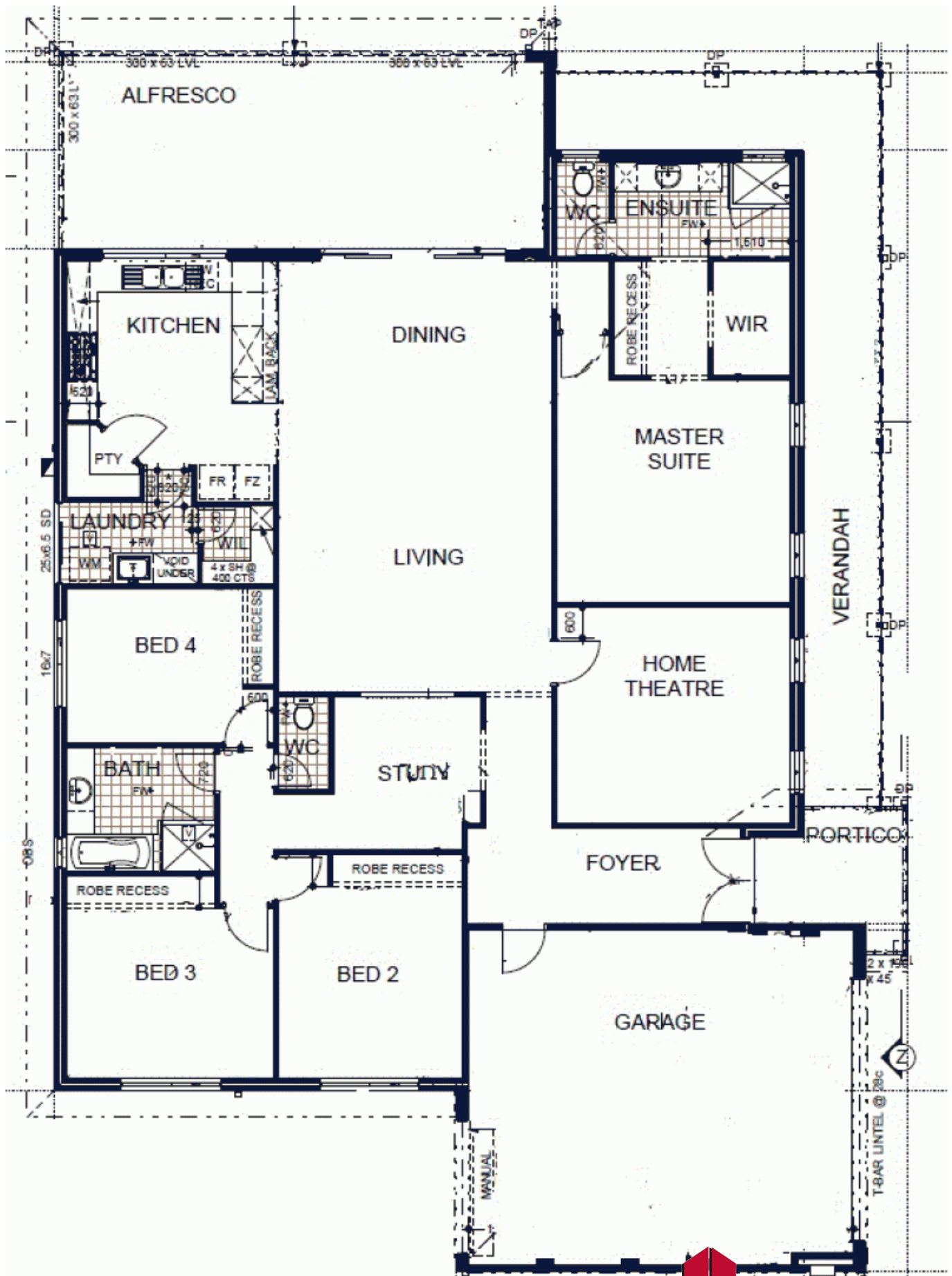
Ruth Nandapi

0419 955 965



Ruth Nandapi

0419 955 965



2 Acona Place

Binningup, WA

