



90 Beach Road Bunbury, WA

 4
  2
  2

Character Home in Tree Street Area or Consulting Rooms

This beautifully maintained character home is in a prime location has everything you would expect in a character home, from the beautiful Jarrah floors, the ornate high ceilings, bull nosed verandah to the lead light french doors.

Depending on your needs or preferences this home could potentially be 2, 3 or 4 bedrooms. Currently it is set up as two bedrooms with a front lounge room, a large office, a large living /dining area and library/music room.

Price: \$600000

Council Rates: \$1,695.00/year (approx)

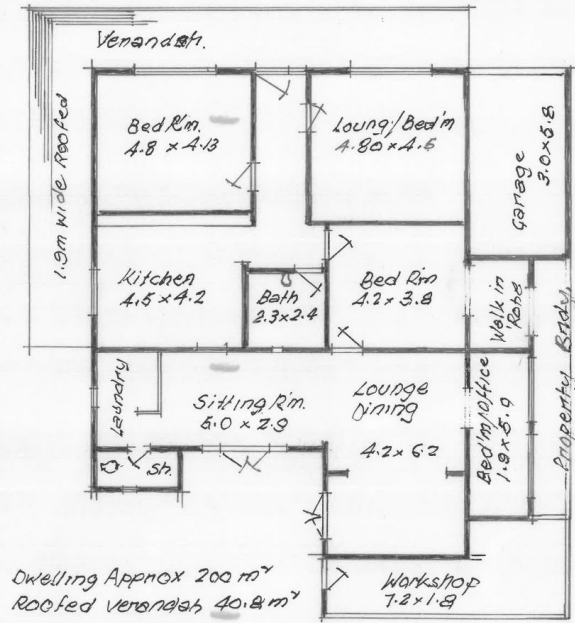
Water Rates: \$251.00/year (approx)



Jim Evans

0410 303 777

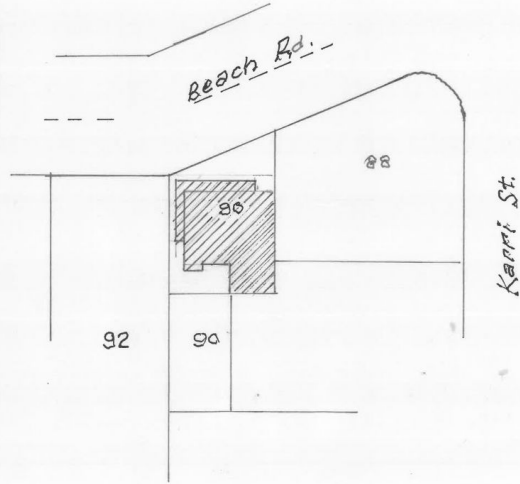
For more details please visit :
<https://www.summitbunbury.com.au/6478525>



Dwelling Approx 200 m²
Roofed Verandah 40.8 m²

PLAN VIEW.

Scale 1:100.



SITE LAYOUT

HOUSE & PROPERTY
22/6/21 90 BEACH RD.
BUNBURY WA
DRAWN R. MORGAN B.E.F.E.A.

90 Beach Road

Bunbury, WA

