



7 Holstein Drive Eaton, WA

 5
  2
  2

IMMACULATE FAMILY HOME

Perfectly positioned within a short distance of local shops, parkland and schools, this immaculate five-bedroom, two-bathroom residence has been thoughtfully looked after the years - all that's left to do is move in!

Beyond the pristine front gardens and ample paved parking, a practical floorplan commences with a carpeted front theatre. Fresh and modern, the kitchen overlooks the tiled meals and living area and features plenty of bench space, double sinks, large walk in pantry and breakfast bar.

The backyard is neat as a pin and offers space to entertain beneath a spacious gabled patio. Manicured gardens frame a stretch of lawn and a garden shed can accommodate all your tools and storage needs.

The four secondary bedrooms are all carpeted for comfort and finished with built-in robes. The main bathroom is well-appointed and bright, with a separate toilet for added function

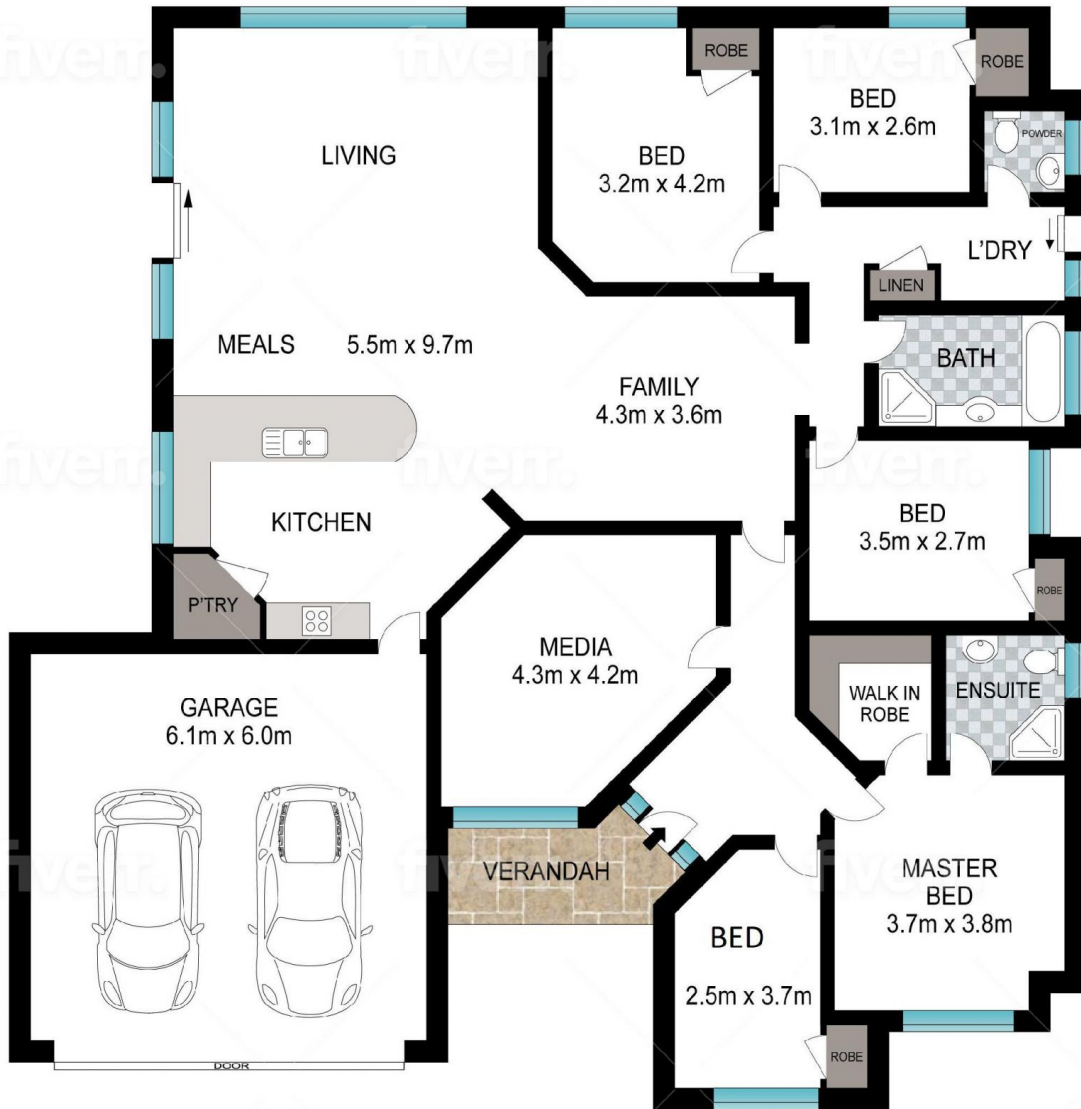
For more details please visit :
<https://www.summitbunbury.com.au/6551635>

Price: \$455000



Tim Cooper

0437 068 028



7 Holstein Drive

Eaton, WA

