



6 Wonil Crescent Dalyellup, WA



3



2



2

## A PLACE TO CALL HOME

Welcome to 6 Wonil Crescent, Dalyellup - a place where you can relax and rejuvenate. Set upon a spacious but maintainable block size of 770m<sup>2</sup>, this three bedroom abode opposite a beautiful park is the perfect downsizer, investment or first home buyer purchase. Light and bright living areas set the tone for this immaculate home which is close to all amenities including the Dalyellup Shopping Centre, local schools, the beach and great parklands. For more information or to arrange a viewing call exclusive selling agent Tim Cooper today!

### PROPERTY FEATURES INCLUDE:

- Stunning front fa-ade with immaculate lawns & gardens
- Great outlook from the front patio to the beautiful park across the road
- Separate carpeted front lounge
- Open plan kitchen, living and dining area
- Spacious master bedroom with walk in robe and including ensuite with separate corner bath

For more details please visit :

<https://www.summitbunbury.com.au/6743456>

**Price:** \$485000

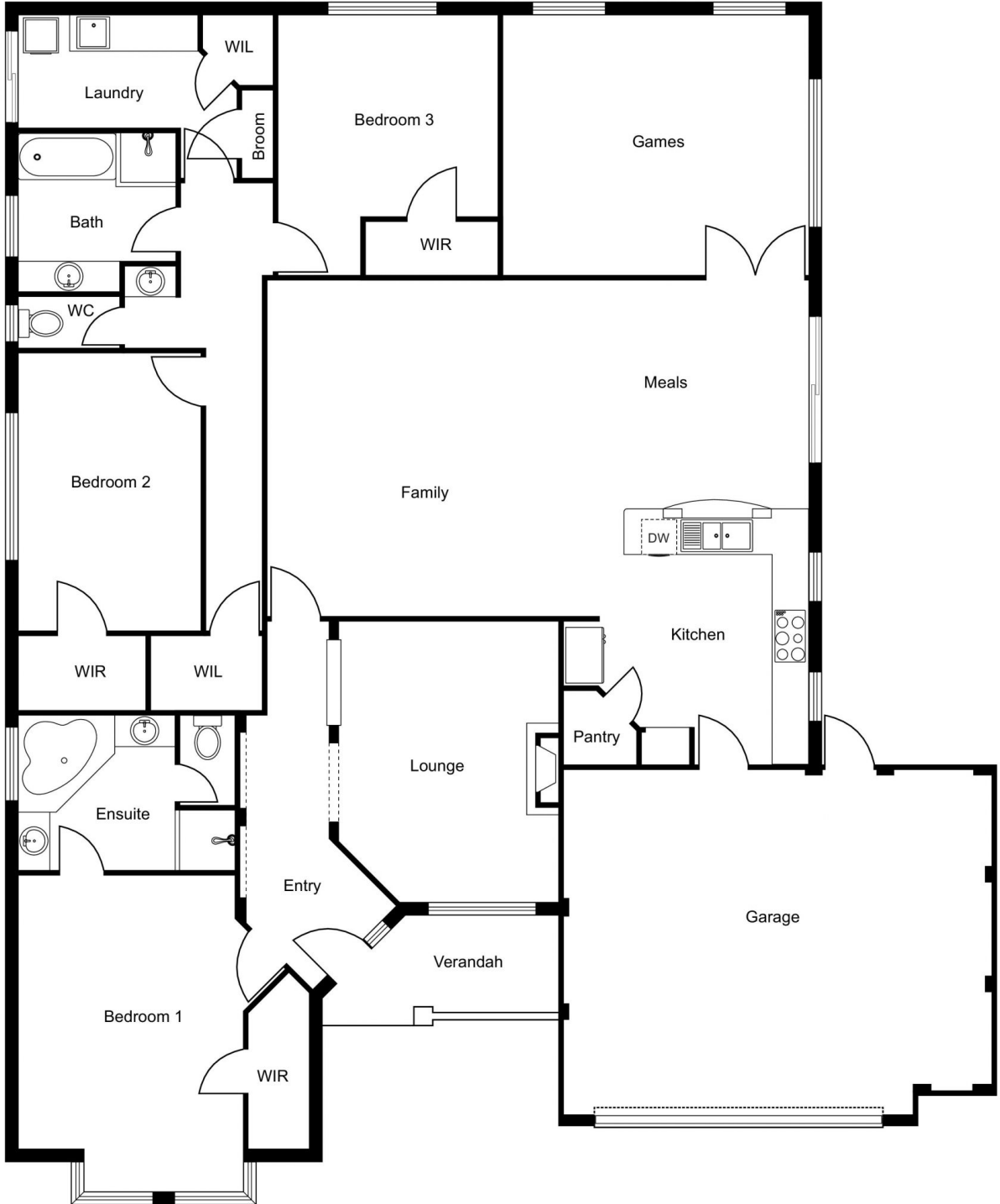
**Council Rates:** \$2,114.00/year (approx)

**Water Rates:** \$948.00/year (approx)



**Tim Cooper**

0437 068 028



6 Wonil Crescent

Dalyellup, WA

