



21 Sleaford Drive Gelorup, WA



## UNDER OFFER WITH TIM COOPER

This outstanding family home situated on a spacious size block of 4,247m2 delivers all the wow factors and is beautifully positioned in a quiet & peaceful location.

This home features three bedrooms, two bathrooms, theatre, study and a stunning outdoor entertaining area. This home has been meticulously maintained over the years and has been designed with the utmost of family living in mind.

### PROPERTY FEATURES:

Spacious with double carport plus extra room for parking  
Open plan living, dining and kitchen making this undoubtedly the hub of the home  
Great sized & functional kitchen with plenty of bench & cupboard space, double fridge rece

For more details please visit :

<https://www.summitbunbury.com.au/6757460>

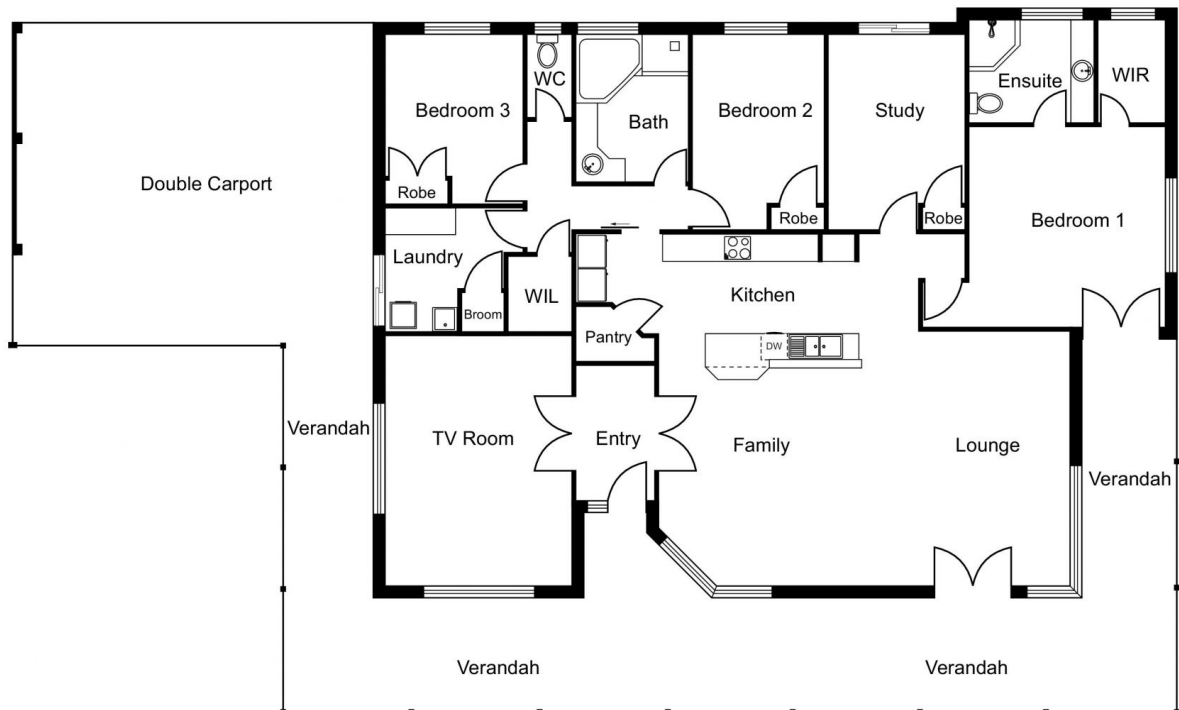
**Price:** From \$790,000

**Council Rates:** \$1,900.00/year (approx)



**Tim Cooper**

0437 068 028



21 Sleaford Drive

Gelorup, WA

