



40 Chrysoberyl View Australind, WA

 4
  2
  2

MODERN TREENDALE DELIGHT

Situated on a generous 543m² block in the sought after Treendale Estate, this spectacular 4-bedroom, 2-bathroom home is set amongst greenery, parklands and all that families are wanting.

The modern kitchen was designed with all the finer details in mind with its 900mm cooktop, Essa stone benchtops, walk-in pantry, and ever so popular window splashback. There is ample storage for all the extras a kitchen needs along with the stunning pendant lights hanging over the breakfast bar.

The master suite is located at the front of the home and is sure to make you feel grand. Featuring a spacious walk-in robe and spectacular ensuite with double vanity, modern rounded mirrors, a stunning yet neutral colour scheme and separate toilet.

Contact exclusive selling agent Adrian Triplett today!

FEATURES

Price: \$545000

Council Rates: \$2,342.53/year (approx)

Water Rates: \$1,309.32/year (approx)

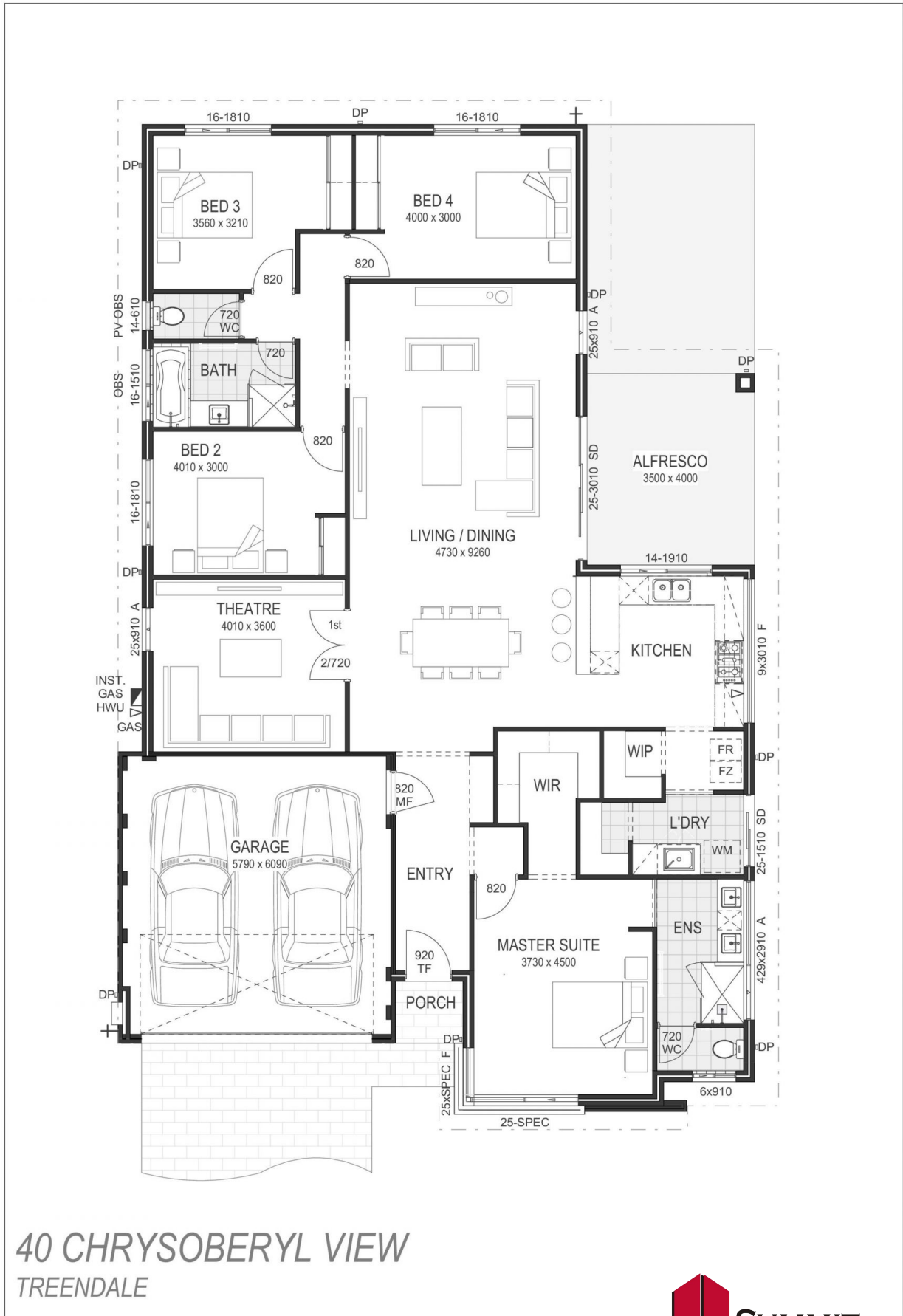


Adrian Triplett

0419 971 888

For more details please visit :

<https://www.summitbunbury.com.au/6953545>



40 Chrysoberyl View

Australind, WA

