



19 Whatman Way Australind, WA

 5
  3
  2

CLIFTON PARKS HIDDEN GEM!

Tucked away and backing onto Bunbury's most prestigious golf course, this stunning family home is one that can't be missed!

This is a beautiful 5 bedroom 3 bathroom two storey home set out on a generous 962m2 battle-axe block. The Main level consists of the master bedroom with ensuite and walk in robes along with 2 minor bedrooms, central kitchen overlooking family/dining area, front lounge room, sunroom and separate activity/games room. Upstairs features 2 more minor bedrooms, bathroom and a third room that would suit an office or playroom.

Price: \$575000

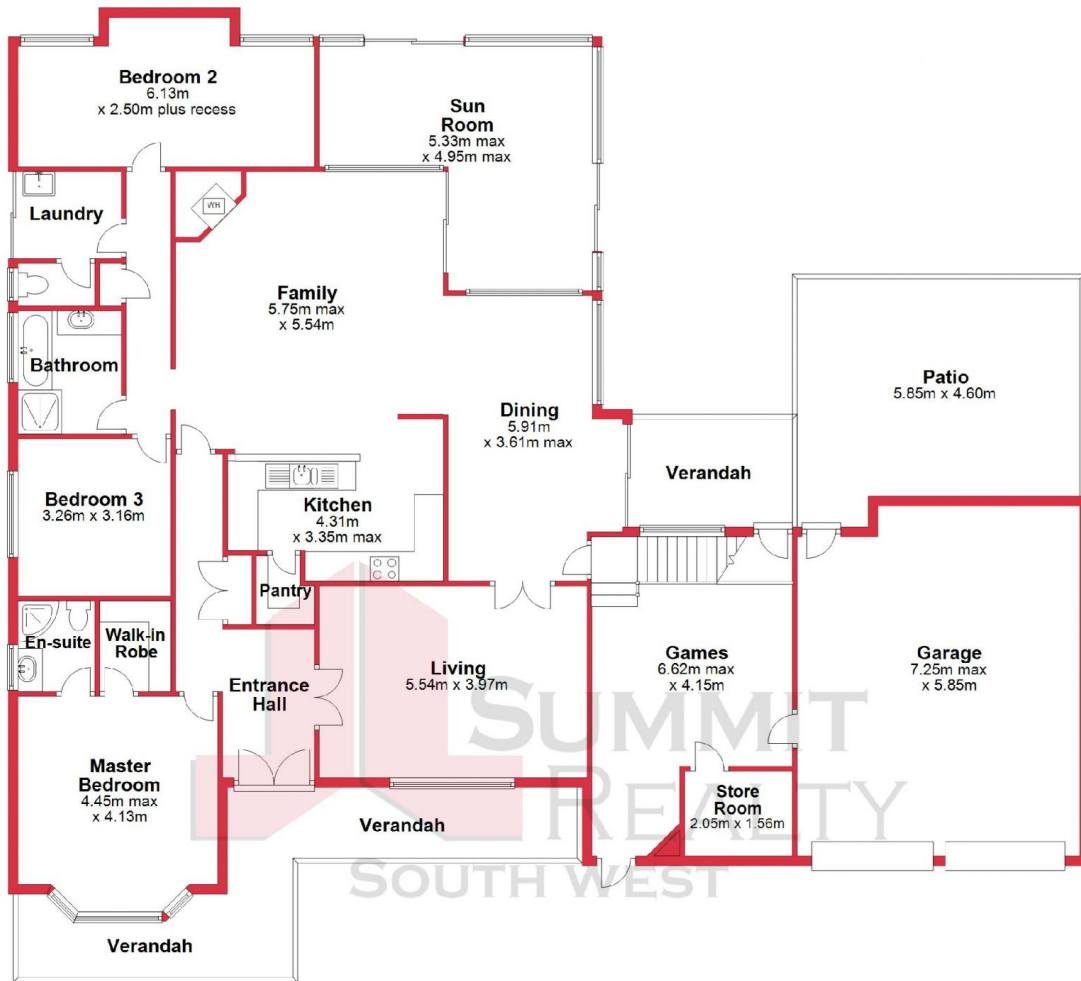
Water Rates: \$1,165.00/year (approx)



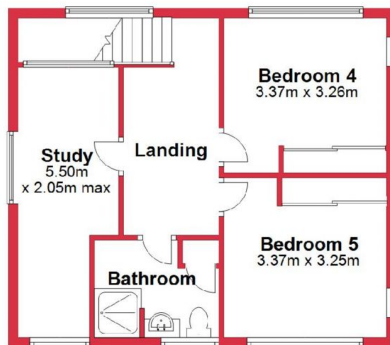
Lorraine Grassie

For more details please visit :
<https://www.summitbunbury.com.au/7015268>

Ground Floor



First Floor



This plan has been prepared for marketing purposes only. Whilst every care is taken in the production of this plan, measurements, angles and positioning of doors/windows may not be accurate. Interested parties are strongly advised to undertake their own checks when establishing the suitability for furniture etc. Not To Scale. Plan produced using PlanUp.

19 Whatman Way, Australind

19 Whatman Way

Australind, WA

