



23B Lucy Victoria Avenue Australind, WA

 3  2  2

SOLD BY TIM COOPER!

// SUITS BUYERS IN THE LOW \$400,000s //

Located in Clifton Park, right in between the Collie River and Bunbury Golf Course, you will find this 2014 built three bedroom & two bathroom modern home on 443m². Perfect for retirees or a first home buyer looking for a low maintenance and easy care home to lock and leave.

Feel safe and secure knowing you can walk your children to Clifton Park Primary just around the corner. Clifton Park has it all and you can have this lifestyle too, live a millionaires dream amongst high quality homes along the water front and watch your investment grow.

PROPERTY FEATURES INCLUDE:

For more details please visit :
<https://www.summitbunbury.com.au/7047800>

Price: \$415000

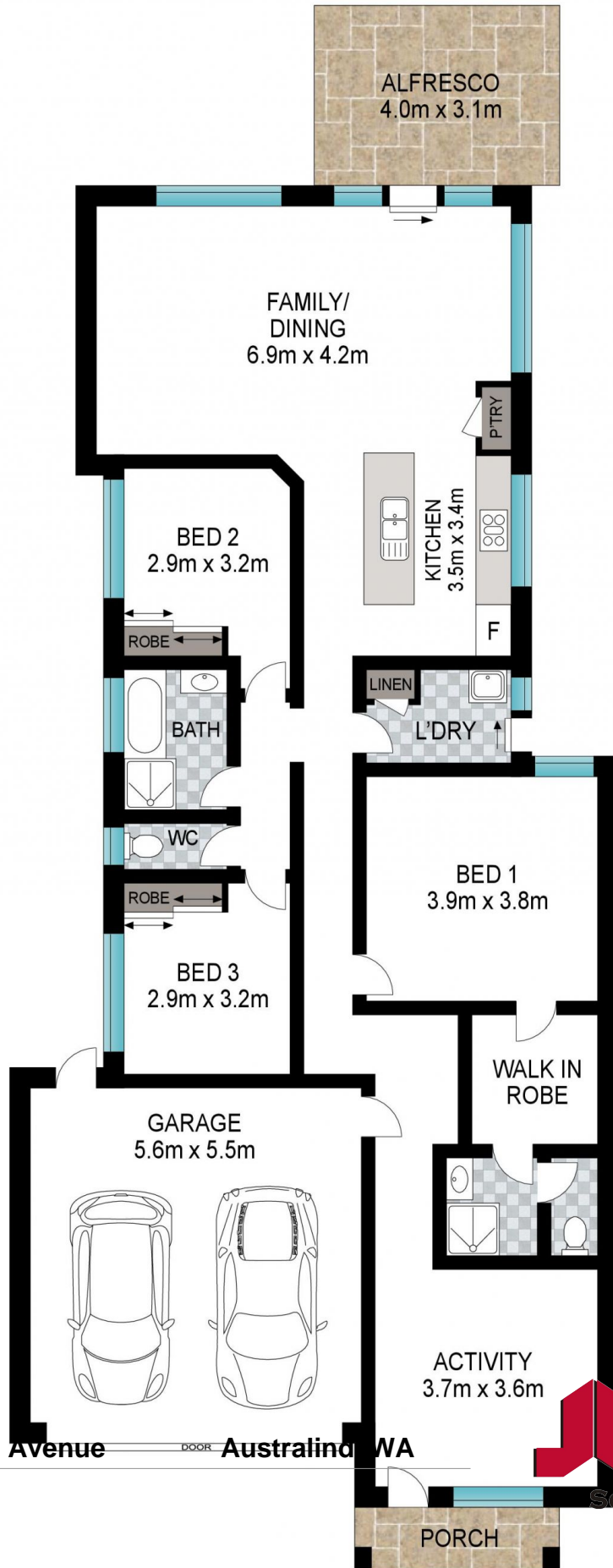
Council Rates: \$2,036.00/year (approx)

Water Rates: \$1,265.00/year (approx)



Tim Cooper

0437 068 028



23B Lucy Victoria Avenue DOOR Australind WA

