



15/6 La Trobe Street Eaton, WA



3



2



2

UNDER OFFER BY TIM COOPER!

Ideally located just a short drive from all amenities, sits this neat as a pin and well-presented three bedroom and two bathroom home. This home is the perfect investment, first home buyer or retiree opportunity.

Boasting open plan living and dining, a low maintenance backyard and sizable bedrooms this is one you really don't want to miss out on!

Don't delay make this house your home or add to your property portfolio and start investing in your future. For more information or to arrange a private viewing call exclusive selling agent Tim Cooper today!

PROPERTY FEATURES INCLUDE:

- Easy care front gardens
- Double automatic garage
- Modern kitchen features large island bench with plenty of bench space, double sinks and oo

For more details please visit :

<https://www.summitbunbury.com.au/7054494>

Price: \$357500

Council Rates: \$2,121.00/year (approx)

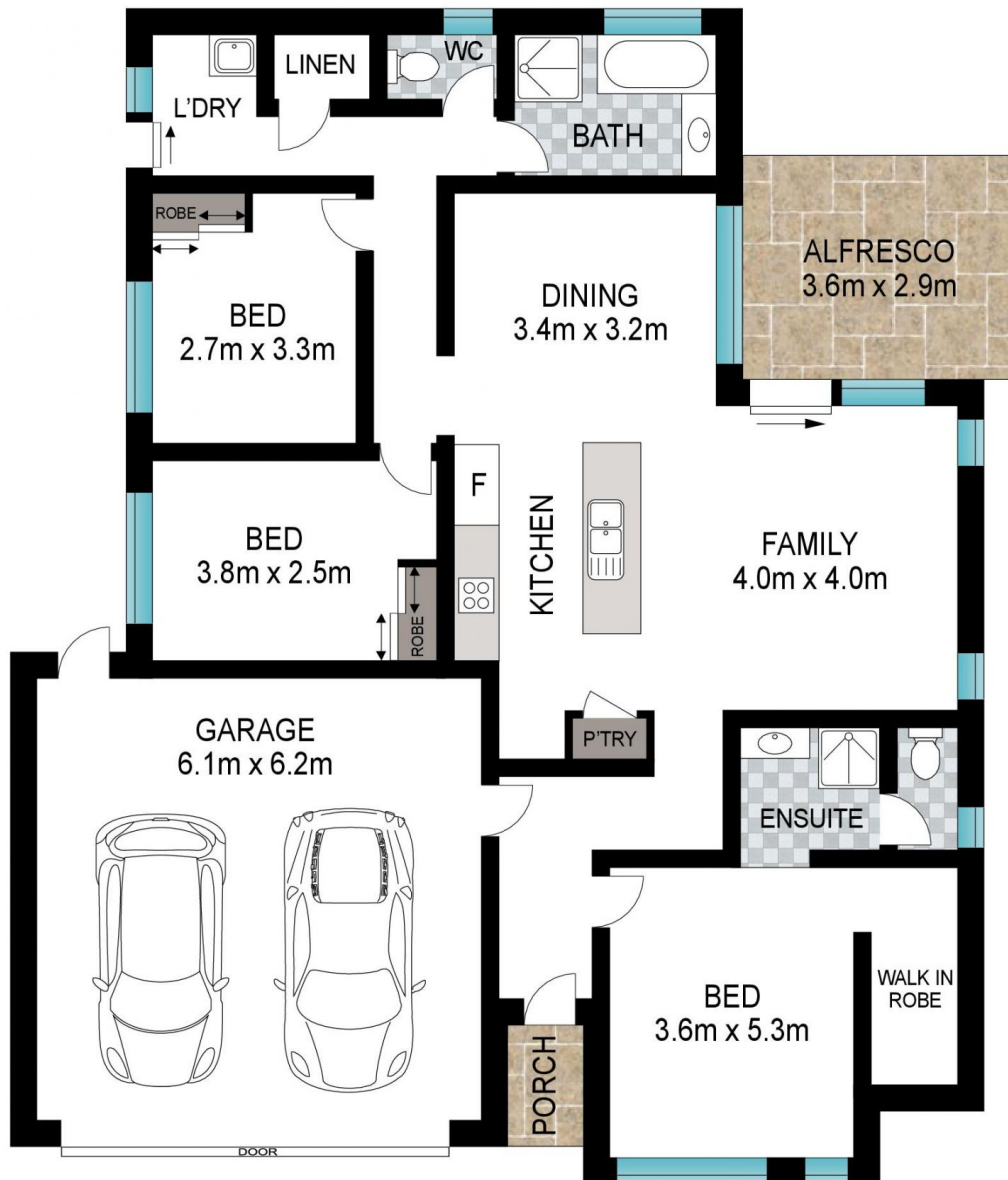
Water Rates: \$1,463.00/year (approx)

Strata Rates: \$592.00/year (approx)



Tim Cooper

0437 068 028



15/6 La Trobe Street

Eaton, WA

