



6/10 Laura Avenue Australind, WA

## **BUILD YOUR HOME OR BUILD TO RENT - YOU CHOOSE!!**

Lots 3 & 4 are also available!!

House and Land packages are available from \$445,000 with a local builder and there are no time constraints to build, for further details or a brochure with the builder's full "Winning Range Specification" list, contact Jim Evans.

The current rental market is crying out for homes, so investors, these lots must be considered.

Located only 200m from the Estuary, easy access to public transport, Doctors Surgery and the Australind Village Shopping Centre.

Albermarle Lithium processing plant at Kemerton staff, the Bunbury Outer Ring Road contractors, people moving out of the City and many more opportunities around Bunbury make these lots ideal for your next home or investment.

Water (connected) Gas (connected) Power (connected) and Sewerage (connected)

Please contact Exclusive Listing Sales Consultant Jim Evans on 0410 303 777 for more information.

**Price:** \$140,000

**Council Rates:** \$1,164.00/year (approx)



**Jim Evans**

0410 303 777

For more details please visit :

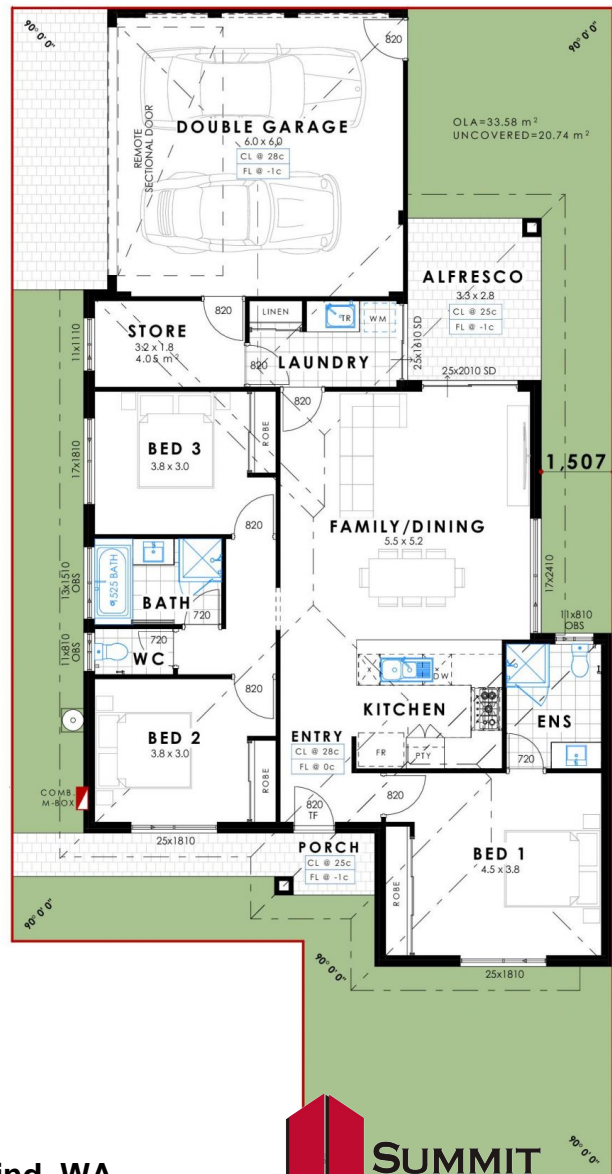
<https://www.summitbunbury.com.au/7305817>



## Unit 6 No.10 Laura Ave Australind

Land 279m<sup>2</sup> | 173 House m<sup>2</sup>  
From \$399,000

- 3 Bedrooms & 2 Bathrooms
- Master Bedroom with BIR's
- 2 minor Bedrooms both with BIR's
- Spacious open plan family/dining & Kitchen area
- Stone bench tops
- All floor and window coverings
- Double lock up Garage
- Alfresco entertaining
- Landscaping & Fencing
- Siteworks included
- Internal store to garage
- Walk to the Estuary, Shops & Schools
- 279sqm block
- Street frontage



Jim Evans  
Summit Realty Southwest  
Phone: 0410 303 777  
Email: jim@summitaustralia.com.au  
6/10 Laura Avenue

Australind, WA

