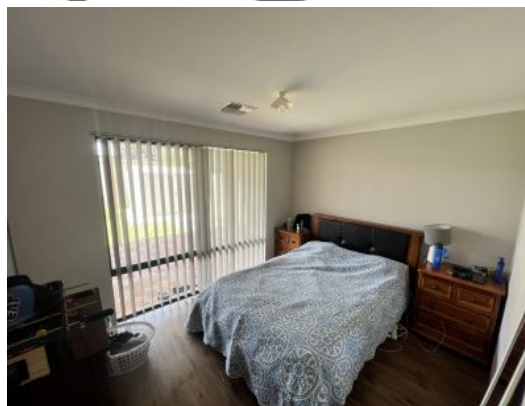




Too new to
photograph



15 Edwinstone Close Dalyellup, WA



4



2



2

APPLICATION PENDING - LARGE FAMILY HOME!

Located across the road from Sherwood park in the heart of Dalyellup. With Dalyellup Beach only approximately a 4 min drive away. This modern family has room for everyone! Features include:

- Two separate living areas
- Four bedrooms
- Study
- Ducted Reverse Cycle Air Conditioning
- Open planned kitchen, living and dining
- Large patio
- 3x3 garden shed
- Double lock up garage with rear access
- Reticulated lawns

Price: \$550.00 per week



Jess Harnett

For more details please visit :

<https://www.summitbunbury.com.au/7359080>