



13 Lofthouse Drive Leschenault, WA

 3
  2
  2

SOLD BY TIM COOPER!

Welcome to 13 Lofthouse Drive a three-bedroom, two-bathroom family home located in the prestigious Australind Waters Estate. Positioned on an impressive 4499m² parcel of land with native bushland surrounds, you can escape the hustle and bustle of the city and recharge your batteries.

Additional features include a 6m x 9m approx. powered workshop, rainwater tank, bore and reticulated gardens, parking space for a caravan or boat and plenty of storage! There is storage space in the ceiling, under the stairs, suitable for storing wine, and an external storage room.

PROPERTY FEATURES

Three-bedroom, two-bathroom home
King sized master bedroom with ceiling fan, ducted air-conditioning, WIR/dressing room & e

For more details please visit :

<https://www.summitbunbury.com.au/7796700>

Price: \$980000

Council Rates: \$2,620.00/year (approx)

Water Rates: \$650.00/year (approx)



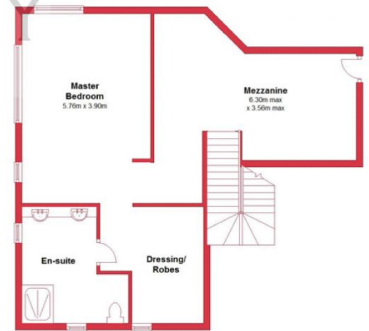
Tim Cooper

0437 068 028

Ground Floor



First Floor



This plan has been prepared for marketing purposes only. Whilst every care is taken in the production of this plan, measurements, angles and positioning of doors/windows may not be accurate. Interested parties are strongly advised to undertake their own checks when establishing the suitability for furniture etc. Not To Scale.
Plan produced using PlanIQ.

13 Lofthouse Drive, Leschenault

13 Lofthouse Drive

Leschenault, WA

