



36 Diadem Street Eaton, WA

 6
  2
  1

TWO STOREY 6 X 2 WITH WORKSHOP ? IDEAL FOR LARGE FAMILIES!

Discover your dream home in Eaton! Presenting a fantastic opportunity and perfectly located opposite Eaton Primary School, this double storey family home beckons first home buyers, large or growing families and astute investors!

Situated on a generous 911sqm block with a lush, leafy backyard, sizeable workshop and a great paved patio entertaining area, this property is ideal for hosting weekend barbecues or enjoying outdoor playtime with the kids!

FEATURES YOU'LL LOVE

For more details please visit :
<https://www.summitbunbury.com.au/7941687>

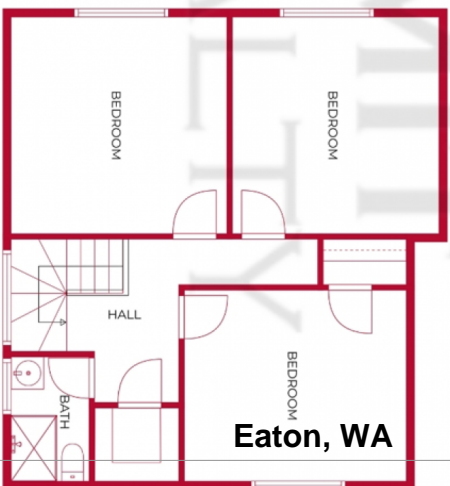
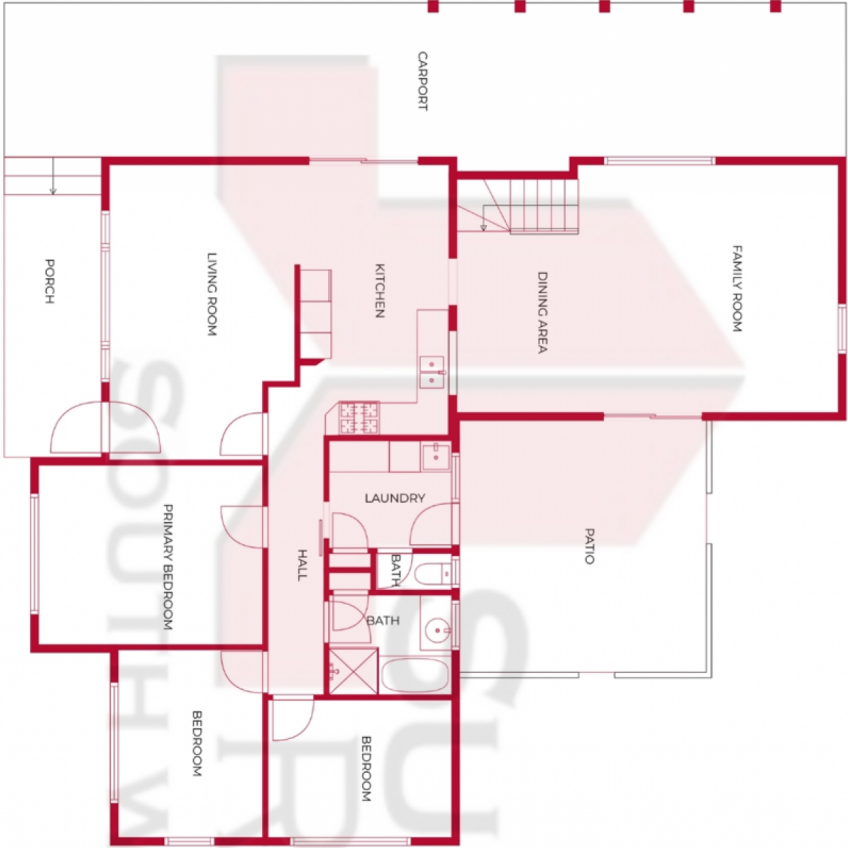
Price: From \$650,000
Inspect: Saturday, 4th May 2024 10:00 - 10:30

Council Rates: \$2,161.65/year (approx)
Water Rates: \$1,514.69/year (approx)



Tim Cooper

0437 068 028



FLOOR	FINISHED	M ²
1	194 M ²	
2	65 M ²	
TOTAL	259 M²	

36 Diadem Street

Eaton, WA



36 DIADEM ST, EATON WA 6232

OFFERED BY: **TIM COOPER**

0437 068 028

tim@summitbunbury.com.au



PREPARED FOR THE EXCLUSIVE USE OF TIM COOPER, SUMMIT REALTY SOUTH WEST. MEASUREMENTS MAY NOT BE 100% ACCURATE. IF CRITICAL BUYER TO VERIFY

