



13 Gecko Lane Binningup, WA



4



2



2

## Family Entertainer with Park Views

Large family homes are often hard to find, so don't be shy in checking out this 2002 built beauty!

Built by Dale Alcock, this Tuscan inspired home enjoys lovely views over the Binningup park and its central location means that you are only minutes from the Country Club, bowling green & school bus stop.

Come inside the double front doors into a tiled entry where you will find:

- A sunken lounge which would also make a large home office or 5th bedroom, occupies the other side of the entry and also enjoys views over the park.
- A door separates the front of the home from the open planned living area. This area has plenty of space for both dining and lounge areas. The kitchen boasts a bulkhead with recessed lights above the black granite benchtops and timber cabinetry. The convenience of a dishwasher, double electric oven and large gas cooktop will make it easy to cater for a

For more details please visit :

<https://www.summitbunbury.com.au/7967230>

**Price:** Sold by Ruth Nandapi

**Council Rates:** \$2,268.42/year (approx)

**Water Rates:** \$1,525.99/year (approx)



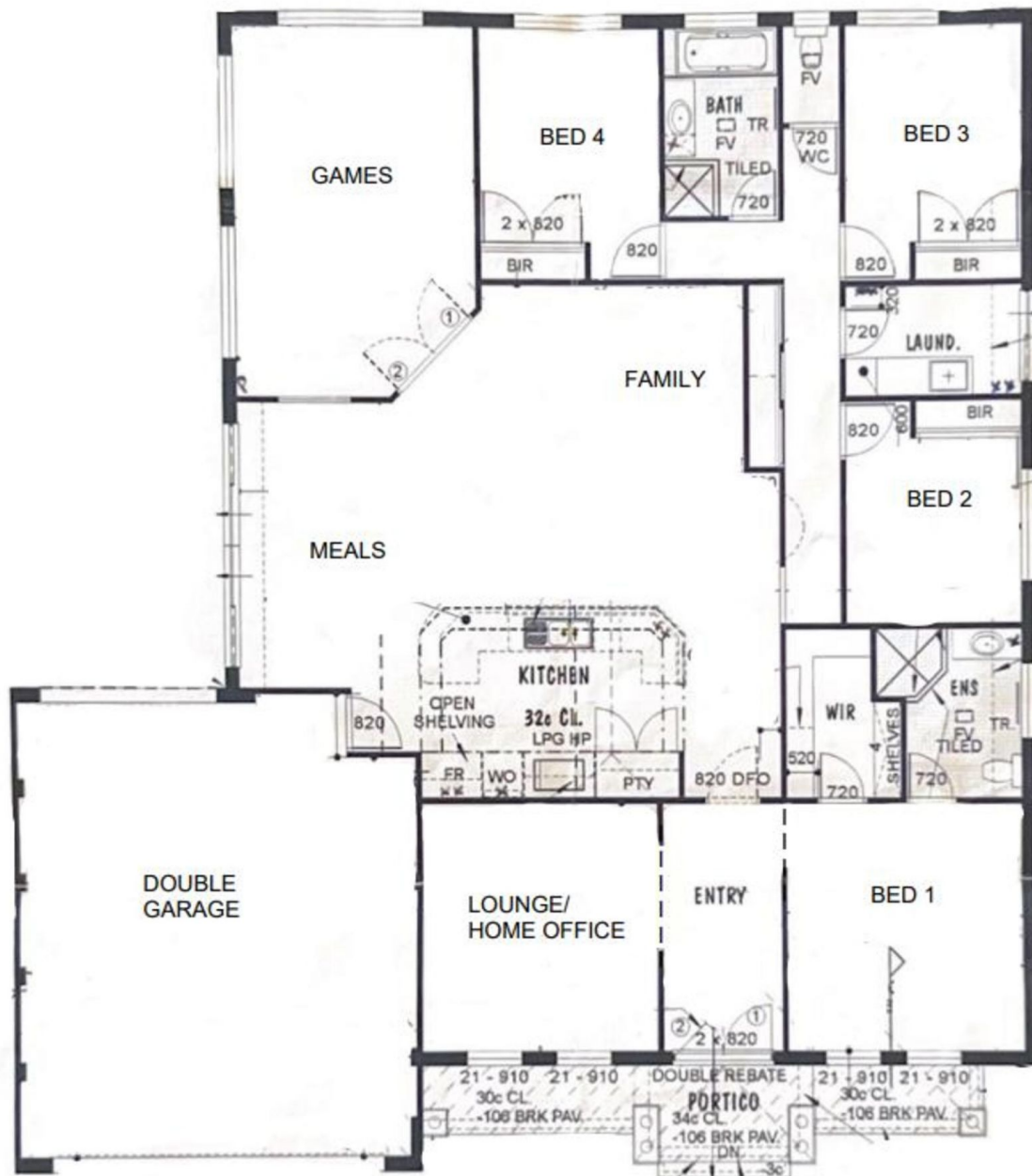
**Ruth Nandapi**

0419 955 965



**Ruth Nandapi**

0419 955 965



13 Gecko Lane

Binningup, WA

